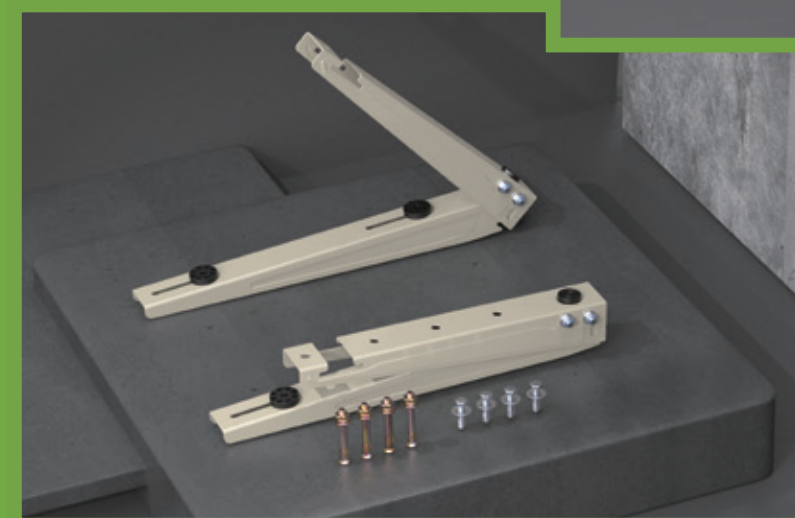
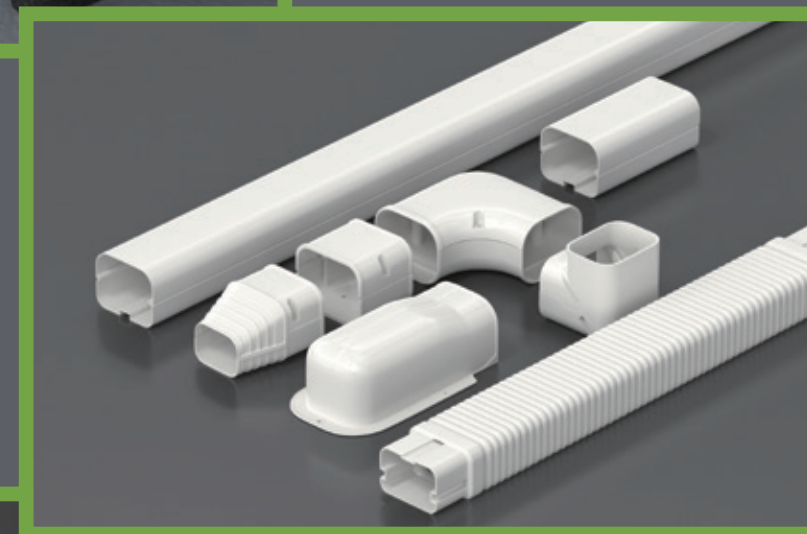


YOUR PROFESSIONAL PARTNER FOR HVAC ACCESSORIES



NOVA HVAC PARTS

Tel.: +1 888-580-2422

<http://www.mynova.us>

Add.: 158-16 79th Ave, Fresh Meadows, NY 11366, USA

TABLE OF CONTENTS


Rubber Block Anti Vibration Support	01-02
Air Conditioner Bracket	03-06
Decorative PVC Line Cover Kit	07-10





Long Leg Anti-vibration Pad
Reduce operating noise
High load bearing and easy installation
Resistant to all weather elements

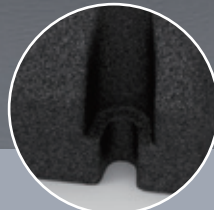
RUBBER BLOCK ANTI VIBRATION SUPPORT

 MODEL NO.NBF250-160-95

Rubber Block Anti Vibration Support



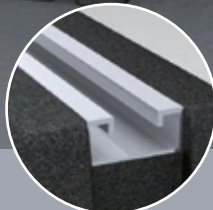
Spirit Level



Reserved Holes



Fixing Bolts



Aluminum Alloy Slot

4× Rubber mounting base



4× Equipment mounting screw set



Resistant to all weather elements



Easy installation



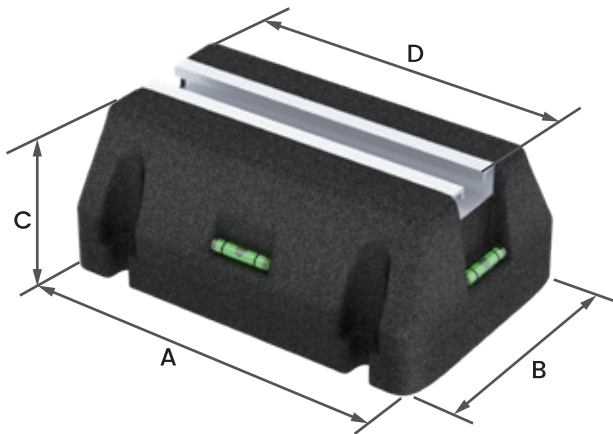
Reduce operating noise



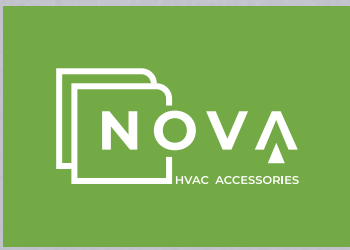
High load bearing

Product Specifications

-Material:	Rubber
-UV Resistant:	Yes
-Color:	Black
-Mounting Track:	Yes



Item Name: NBF250-160-95			
Model No.	Size: A×B×C×D(mm)	Size: A×B×C×D(inch)	Pcs/Set
NBF250-160-95	250×163×98×210	9 ⁷ / ₈ ×6 ³ / ₈ ×3 ⁷ / ₈ ×8 ¹ / ₄	4



AIR CONDITIONER BRACKET

For wall mount, raise equipment above ground for protection from snow and flood

MODEL NO.N1822 Foldable type



- Foldable design for quick in-site installation
- Powder coating finish
- High strength and stability
- Weather-resistant
- Pre-punched holes for easy installation to wall structure

Loading Capacity Up to
485lbs



Weather Proof Design



Durable Construction



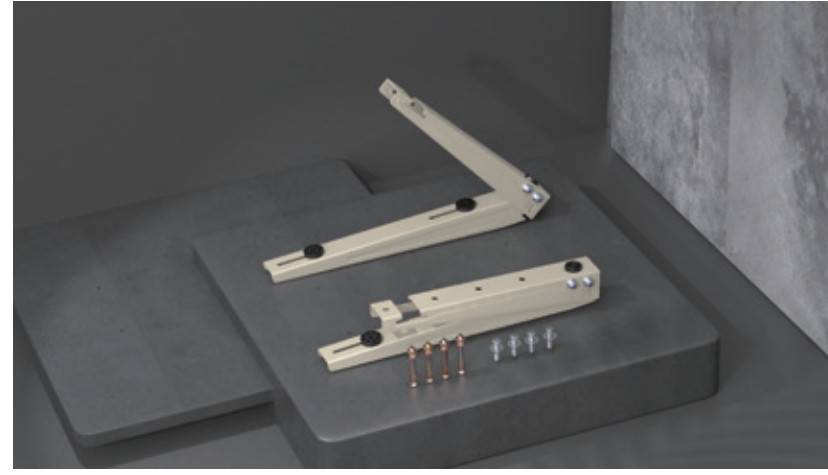
Secure Protection



Paintable Design



Vertical Stabilizer



Product Specifications

-Material:	Galvanized Steel
-Sheet Gauge:	14 GA
-Rubber used for isolator:	TPE rubber
-UV Resistant:	Yes
-Powder Coating:	Yes
-Color:	White / Customized

Item Name: N1822					
Model No.	Size : H×D(in)	Size : H×D(mm)	Thickness	N.W	Max Loading
N1822	17¾×22	450×560	14 GA (1.8mm)	8.8lbs(4kg)	485 lbs

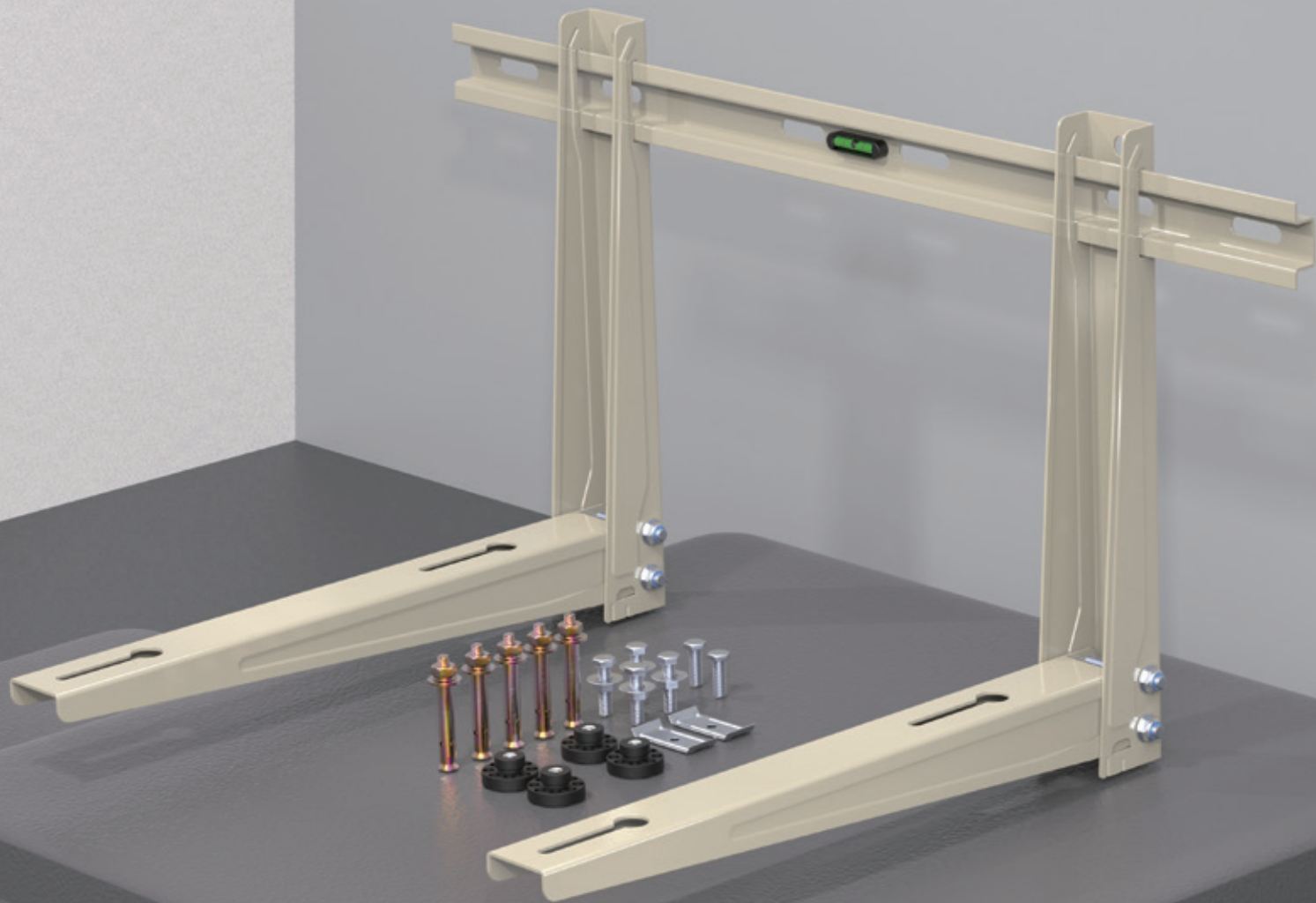
- Bracket is designed for masonry wall mount, for stud wall mount proper blocking must be made between studs to ensure proper wall bracing will accommodate bracket weight load.
- The bracket must be securely fixed to wall with all screws fastened tightly.
- Do not make any modification to bracket assembly or fixings



AIR CONDITIONER BRACKET

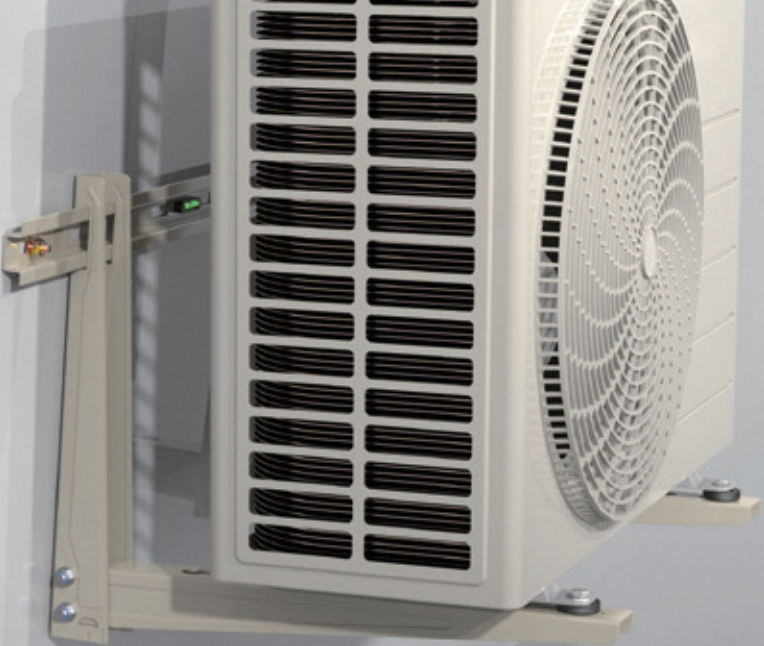
For wall mount, raise equipment above ground for protection from snow and flood

MODEL NO.N341822B Foldable type



- Cross bar design with mini spirit level
- Powder coating finish
- Weather resistant
- High strength and stability
- Wear-resistant, waterproof and rust-proof
- Pre-punched holes for easy installation to wall structure

Loading Capacity Up to
485lbs



Weather Proof Design



Durable Construction



Secure Protection



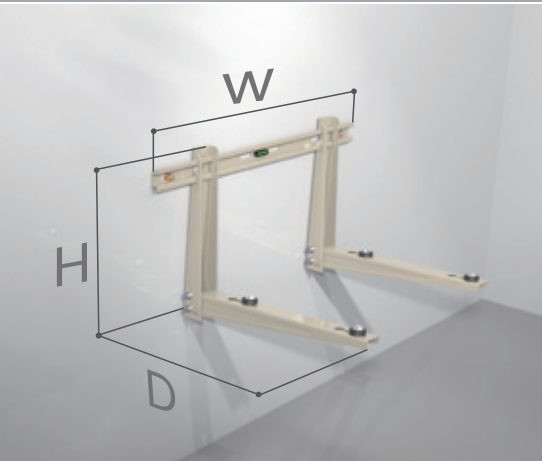
Paintable Design



Built-in Level



Vertical Stabilizer



Product Specifications

-Material:	Galvanized Steel
-Sheet Gauge:	14 GA
-Rubber used for isolator:	TPE rubber
-UV Resistant:	Yes
-Powder Coating:	Yes
-Color:	White / Customized

Item Name: N341822B					
Model No.	Size: W×H×D(in)	Size: W×H×D(mm)	Thickness	N.W	Max Loading
N341822B	33½×17¾×22	850×450×560	14 GA (1.8mm)	10.8lbs(4.9kg)	485 lbs



-Bracket is designed for masonry wall mount, for stud wall mount proper blocking must be made between studes to ensure proper wall bracing will accommodate bracket weight load.
-The bracket must be securely fixed to wall with all screws fastened tightly.
-Do not make any modification to bracket assembly or fixings

FEATURES

For mini split & central air conditioners and heat pumps

- Weather proof and UV resistant material
- Snap-on design for quick installation
- Alignment tabs on fittings for easy installation
- Protect lineset and tube for mini-splits, and ducted AC systems
- Paintable, stylish, fits any residential or commercial building

Wall Inlet Cover



Extension Joint



90° Flat Elbow



End Cap



90° Elbow Bend



Adjustable Flat Elbow



Adjustable Elbow Bend



Ceiling Cap



T-joint



45° Elbow



Flexible Tube



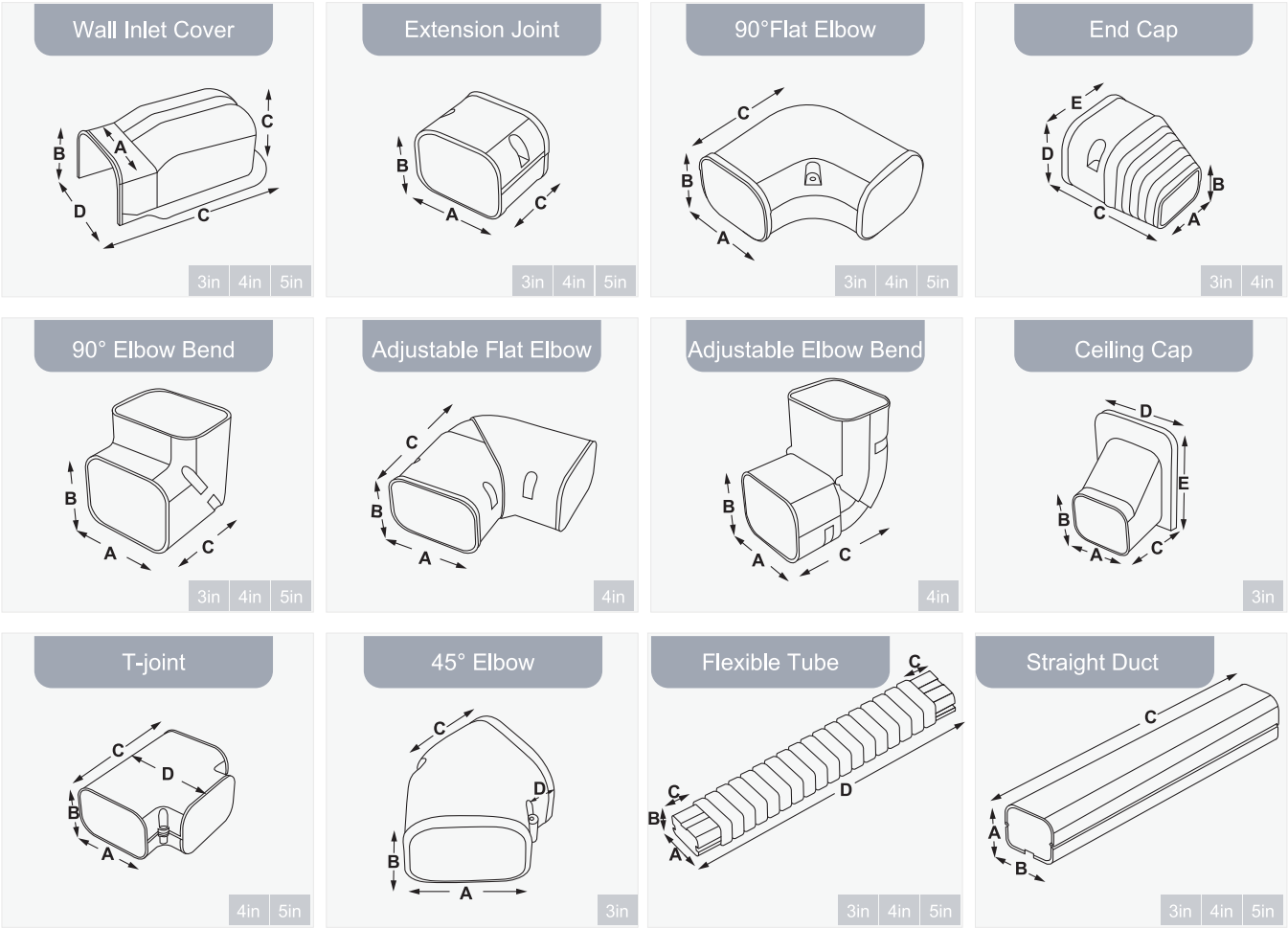
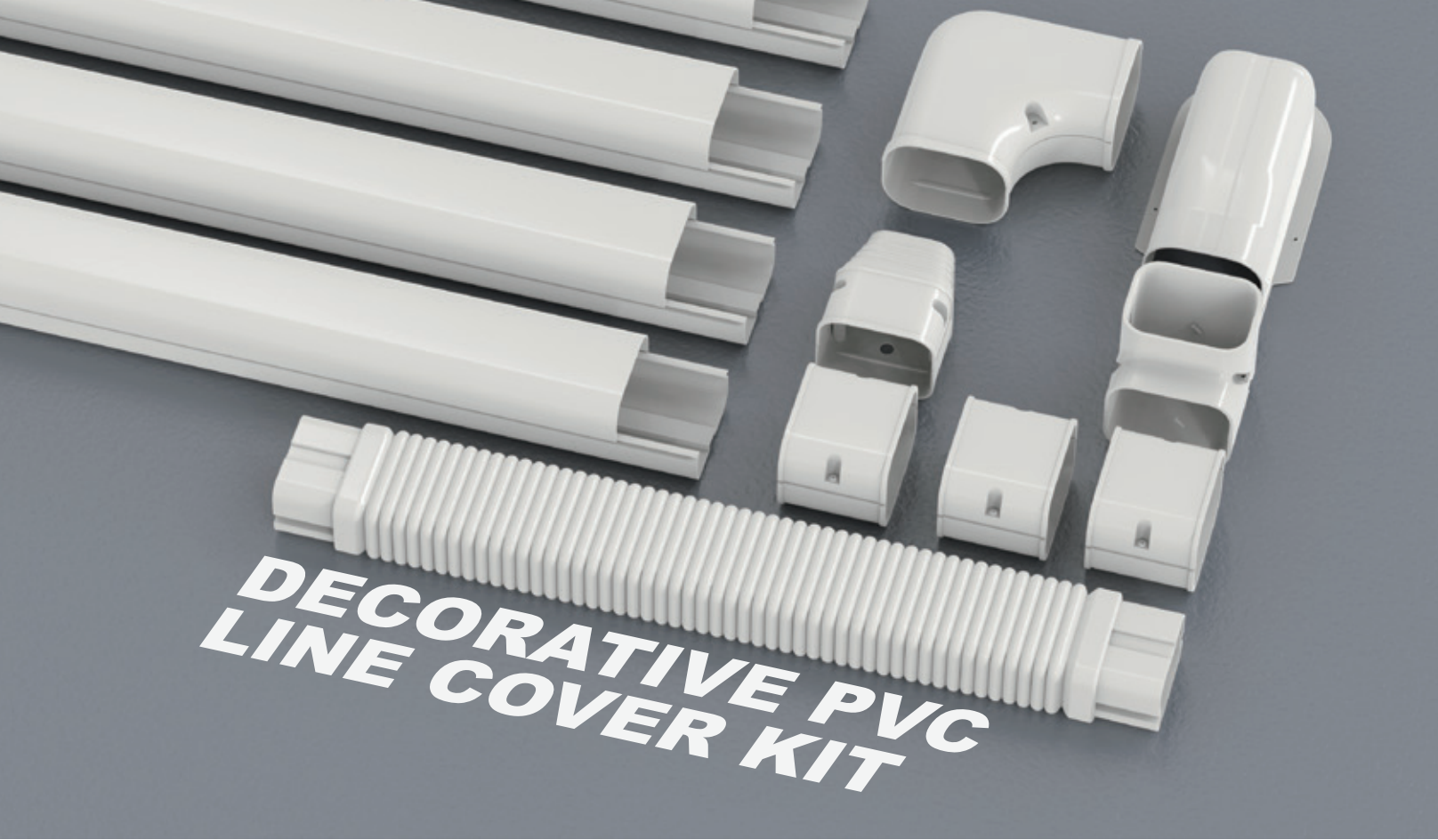
Straight Duct



DECORATIVE PVC LINE COVER KIT



- Recommend to sketch a diagram of the desired line set path to determine how much tubing and how many elbows ,couplings and other pieces you will need.
- Recommend to follow the Line Set Cover Capacity to ensure a smooth line set run.



Note: 3inch, 4inch and 5inch added on the pictures, means those parts have corresponding specifications.

Part List Available in WHITE, BROWN. Size 3", 4", 5"

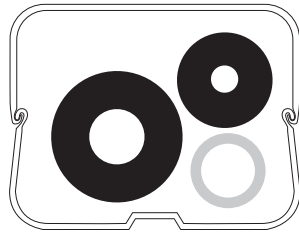
Specification (3 inch)						
Item	Model Number	Dimension (in.)				
		A	B	C	D	E
Straight Duct	NLC301-1	2-7/8	2-3/8	39-3/8	/	/
	NLC301-2	2-7/8	2-3/8	78-3/4	/	/
	NLC301-3	2-7/8	2-3/8	118-1/8	/	/
Extension Joint	NLC302	3	2-1/2	2-1/2	/	/
Wall Inlet Cover	NLC303	3	2-1/2	7	4-1/4	3-1/8
End Cap	NLC304	2	1-3/8	3-3/4	3	2-1/2
90° Flat Elbow	NLC305	3	2-1/2	5	/	/
90° Elbow Bend	NLC306	3	2-1/2	4	/	/
Flexible Tube	NLC307	3	2-1/2	2	25	/
Ceiling Cap	NLC308	3	2-1/2	3-1/8	4-1/4	5-1/2
45° Elbow	NLC312	3	2-1/2	2-1/8	7/8	/

Specification (4 inch)						
Item	Model Number	Dimension (in.)				
		A	B	C	D	E
Straight Duct	NLC401-1	3-7/8	2-1/2	39-3/8	/	/
	NLC401-2	3-7/8	2-1/2	78-3/4	/	/
	NLC401-3	3-7/8	2-1/2	118-1/8	/	/
Extension Joint	NLC402	4	2-5/8	2	/	/
Wall Inlet Cover	NLC403	4	2-3/4	8-5/8	5-1/4	3-1/4
End Cap	NLC404	3	2-1/2	4-1/4	4	2-3/4
90° Flat Elbow	NLC405	4	2-3/4	5-1/2	/	/
90° Elbow Bend	NLC406	4	2-3/4	4-1/8	/	/
Flexible Tube	NLC407	3-7/8	2-1/2	2-1/4	30	/
T-joint	NLC409	4	2-3/4	6	5-1/2	/
Adjustable Flat Elbow	NLC410	4	2-3/4	6-3/4	/	/
Adjustable Elbow Bend	NLC411	4	2-3/4	5-1/2	/	/

Specification (5 inch)						
Item	Model Number	Dimension (in.)				
		A	B	C	D	E
Straight Duct	NLC501-1	4-7/8	3-3/8	39-3/8	/	/
	NLC501-2	4-7/8	3-3/8	78-3/4	/	/
	NLC501-3	4-7/8	3-3/8	118-1/8	/	/
Extension Joint	NLC502	5-1/4	3-1/2	3-1/8	/	/
Wall Inlet Cover	NLC503	5	3-5/8	9-1/4	6-5/8	4-3/4
90° Flat Elbow	NLC505	5-1/8	3-1/2	6-7/8	/	/
90° Elbow Bend	NLC506	5	3-5/8	6-3/4	/	/
Flexible Tube	NLC507	4-7/8	3-1/2	3	30-3/4	/
T-joint	NLC509	5-1/4	3-1/2	8-1/8	6-3/4	/

3 inch Line Set Cover

BTU - 12,000

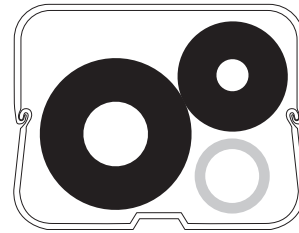


Suction Line - 1/2" OD
(Insulation) - 3/8"

Liquid Line - 1/4" OD
(Insulation) - 3/8"

Drain Hose - 3/4" PVC

BTU - 24,000

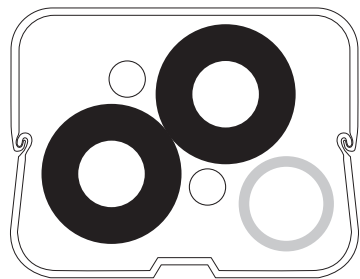


Suction Line - 1/2" OD
(Insulation) - 3/8"

Liquid Line - 1/4" OD
(Insulation) - 3/8"

Drain Hose - 3/4" PVC

4 inch Line Set Cover

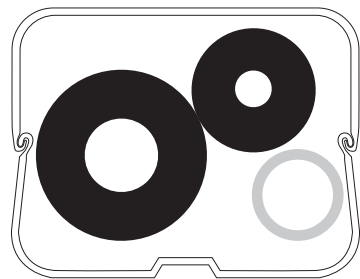


BTU - 36,000

2 X Suction Line - 3/4" OD
(Insulation) - 3/8"

2 X Liquid Line - 3/8" OD

Drain Hose - 3/4" PVC

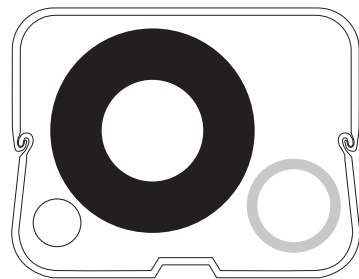


BTU - 42,000

Suction Line - 3/4" OD
(Insulation) - 1/2"

Liquid Line - 3/8" OD
(Insulation) - 1/2"

Drain Hose - 7/8" PVC



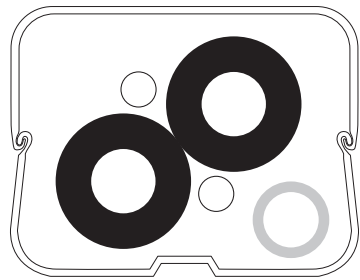
BTU - 60,000

Suction Line - 1-1/8" OD
(Insulation) - 1/2"

Liquid Line - 1/2" OD

Drain Hose - 3/4" PVC

5 inch Line Set Cover

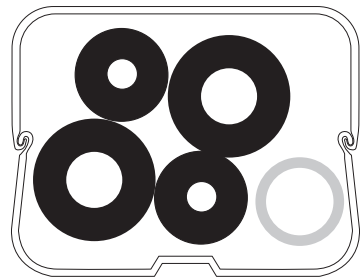


BTU - 36,000

2 X Suction Line - 3/4" OD
(Insulation) - 3/8"

2 X Liquid Line - 3/8" OD

Drain Hose - 3/4" PVC

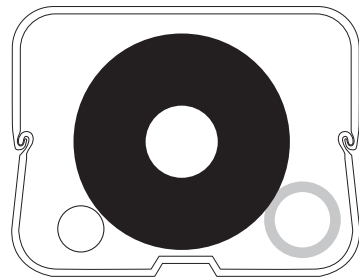


BTU - 42,000

2 X Suction Line - 3/4" OD
(Insulation) - 1/2"

2 X Liquid Line - 3/8" OD
(Insulation) - 1/2"

Drain Hose - 7/8" PVC



BTU - 60,000

Suction Line - 1-1/8" OD
(Insulation) - 1"

Liquid Line - 1/2" OD

Drain Hose - 3/4" PVC



-Recommend to sketch a diagram of the desired line set path to determine how much tubing and how many elbows ,couplings and other pieces you will need.
-Recommend to follow the Line Set Cover Capacity to ensure a smooth line set run.



Combinations

- Packed with selected line set covers and connection parts
- Customized combinations available upon request

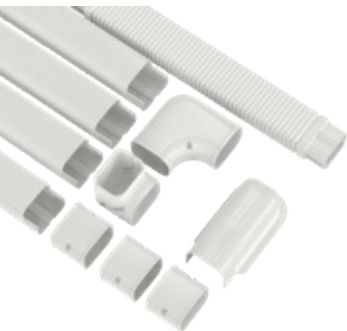
3"W x 14Ft Combinations: NLC-COM314



Parts List

39-3/8in Straight Duct	x 4
Extension Joint	x 3
End Cap	x 1
Wall Inlet Cover	x 1
90° Flat Elbow	x 1
90° Elbow Bend	x 1
Flexible Tube	x 1

4"W x 14Ft Combinations: NLC-COM414



Parts List

39-3/8in Straight Duct	x 4
Extension Joint	x 3
Wall Inlet Cover	x 1
90° Flat Elbow	x 1
90° Elbow Bend	x 1
Flexible Tube	x 1



-Recommend to sketch a diagram of the desired line set path to determine how much tubing and how many elbows ,couplings and other pieces you will need.
-Recommend to follow the Line Set Cover Capacity to ensure a smooth line set run.