



NOVA HVAC PARTS

Tel.: +1 888-580-2422
<http://www.mynova.us>



**YOUR PARTNER
FOR PROFESSIONAL
HVAC ACCESSORIES**

TABLE OF CONTENTS

Rubber Block Anti Vibration Support 01-02

Air Conditioner Bracket 03-06

Decorative PVC Line Cover Kit 07-12

Condensate Pump 13-32



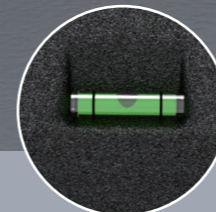
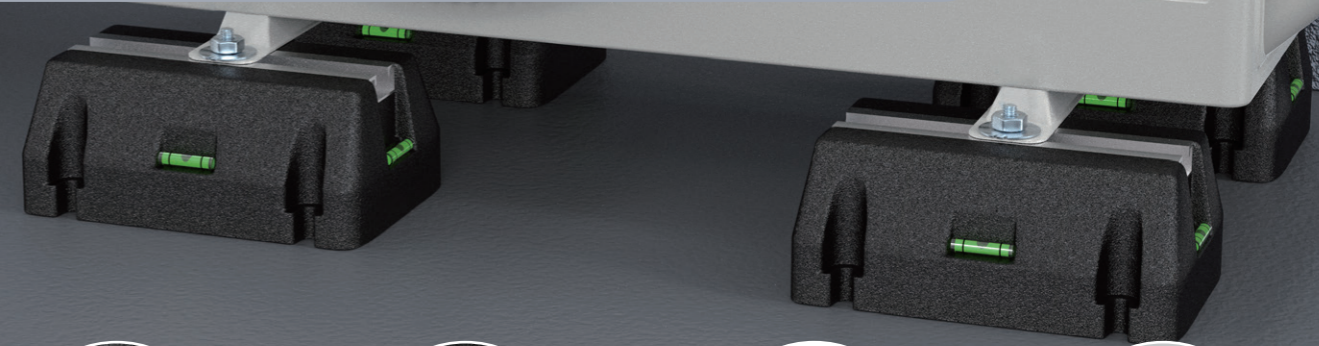


Long Leg Anti-vibration Pad
 Reduce operating noise
 High load bearing and easy installation
 Resistant to all weather elements

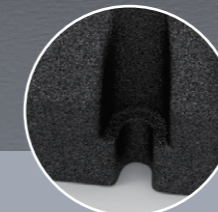
RUBBER BLOCK ANTI VIBRATION SUPPORT

 MODEL NO. NBF250-160-95

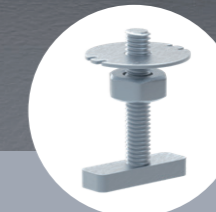
Rubber Block Anti Vibration Support



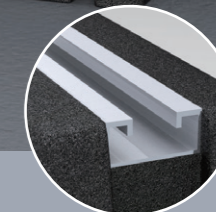
Spirit Level



Reserved Holes



Fixing Bolts



Aluminum Alloy Slot

4x Rubber mounting base



Resistant to all weather elements



Easy installation



Reduce operating noise



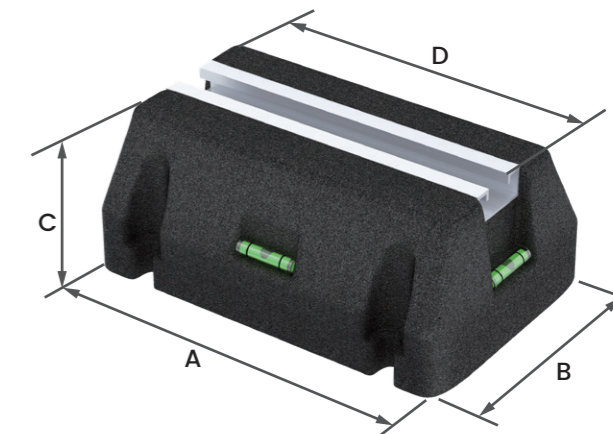
High load bearing

4x Equipment mounting screw set



Product Specifications

-Material:	Rubber
-UV Resistant:	Yes
-Color:	Black
-Mounting Track:	Yes



Item Name: NBF250-160-95			
Model No.	Size: A×B×C×D(mm)	Size: A×B×C×D(inch)	Pcs/Set
NBF250-160-95	250×163×98×210	9 ⁷ / ₈ ×6 ³ / ₈ ×3 ⁷ / ₈ ×8 ¹ / ₄	4



AIR CONDITIONER BRACKET

For wall mount, raise equipment above ground for protection from snow and flood

MODEL NO.N1822 Foldable type



- Foldable design for quick on-site installation
- Powder coating finish
- High strength and stability
- Weather-resistant
- Pre-punched holes for easy installation to wall structure

Loading Capacity Up to
485lbs



Weather Proof Design



Durable Construction



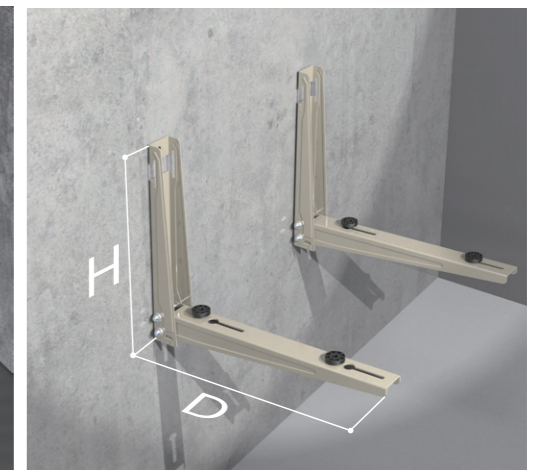
Secure Protection



Paintable Design



Vertical Stabilizer



Product Specifications

-Material:	Galvanized Steel
-Sheet Gauge:	14 GA
-Rubber used for isolator:	TPE rubber
-UV Resistant:	Yes
-Powder Coating:	Yes
-Color:	White / Customized

Item Name: N1822					
Model No.	Size :H×D(in)	Size :H×D(mm)	Thickness	N.W	Max Loading
N1822	17¾×22	450×560	14 GA (1.8mm)	8.8lbs(4kg)	485 lbs

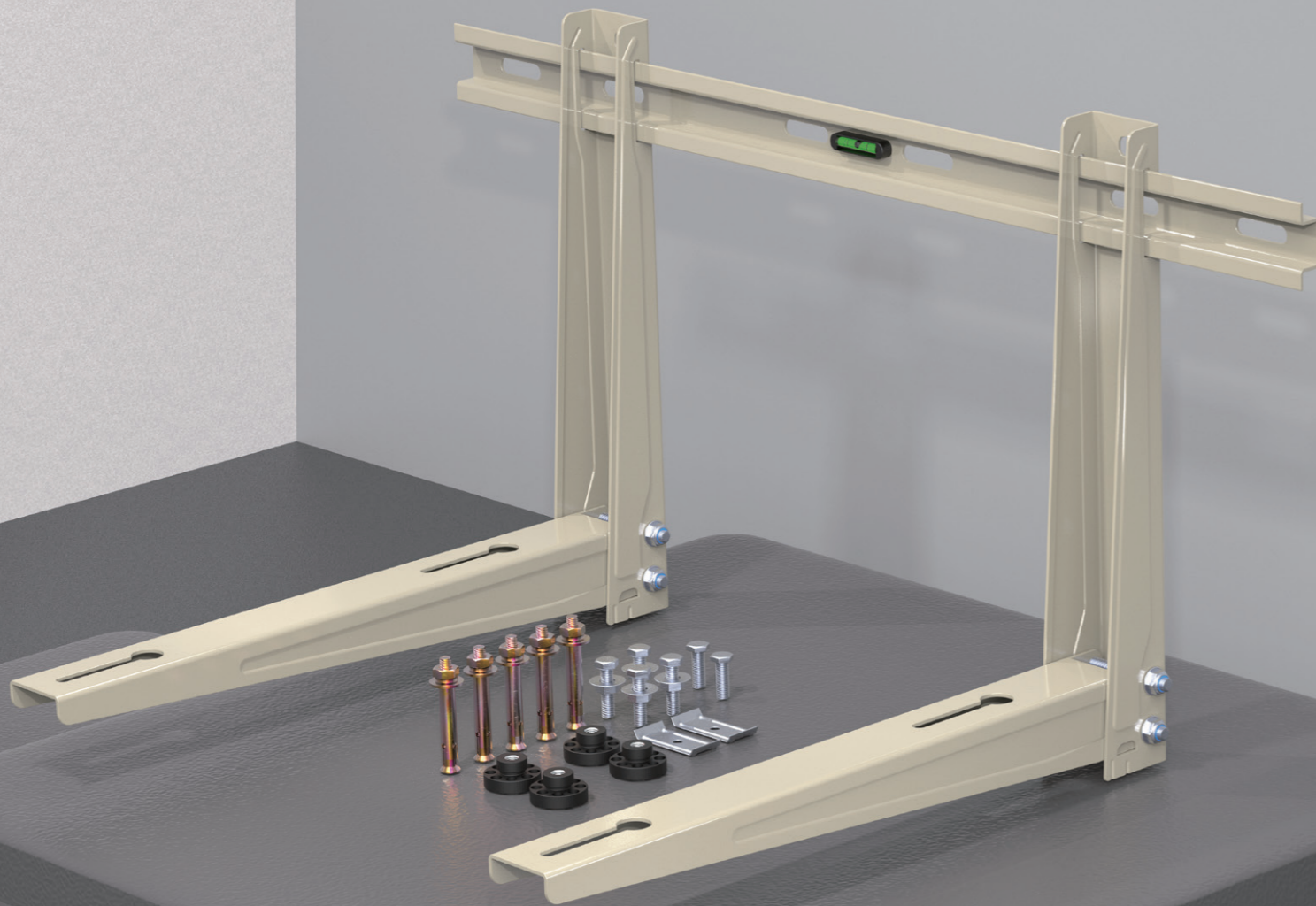
- Bracket is designed for masonry wall mount, for stud wall mount proper blocking must be made between studs to ensure proper wall bracing will accommodate bracket weight load.
- The bracket must be securely fixed to wall with all screws fastened tightly.
- Do not make any modification to bracket assembly or fixings



AIR CONDITIONER BRACKET

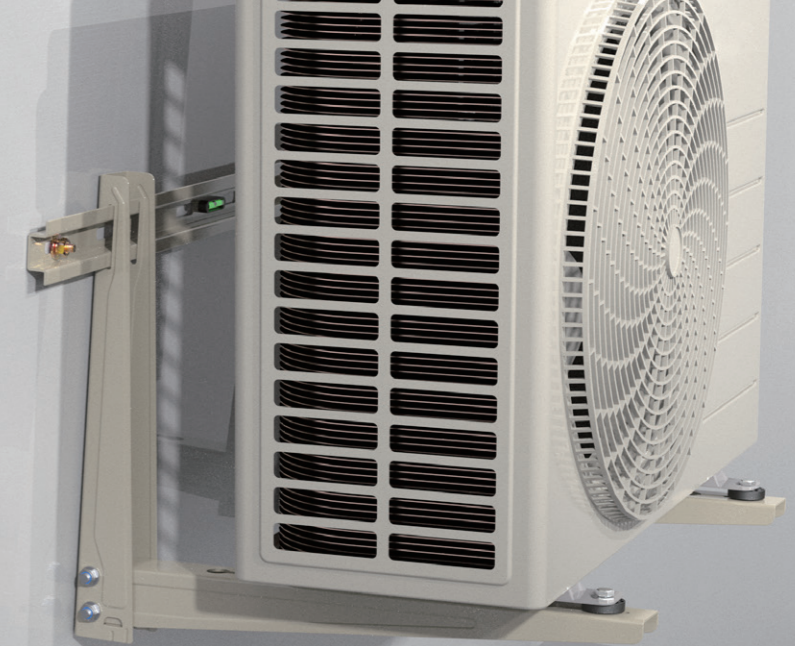
For wall mount, raise equipment above ground for protection from snow and flood

MODEL NO. N341822B Foldable type



- Cross bar design with bubble level
- Powder coating finish
- Weather resistant
- High strength and stability
- Wear-resistant, waterproof and rust-proof
- Pre-punched holes for easy installation to wall structure

Loading Capacity Up to **485lbs**



Weather Proof Design



Durable Construction



Secure Protection



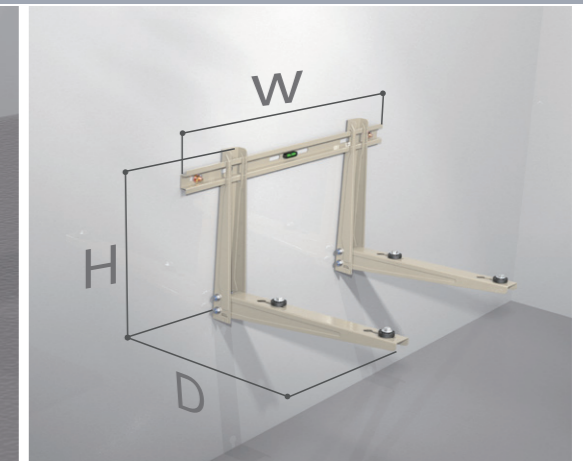
Paintable Design



Built-in Level



Vertical Stabilizer



Product Specifications

-Material:	Galvanized Steel
-Sheet Gauge:	14 GA
-Rubber used for isolator:	TPE rubber
-UV Resistant:	Yes
-Powder Coating:	Yes
-Color:	White / Customized

Item Name: N341822B

Model No.	Size: W×H×D(in)	Size: W×H×D(mm)	Thickness	N.W	Max Loading
N341822B	33½×17¾×22	850×450×560	14 GA (1.8mm)	10.8lbs(4.9kg)	485 lbs

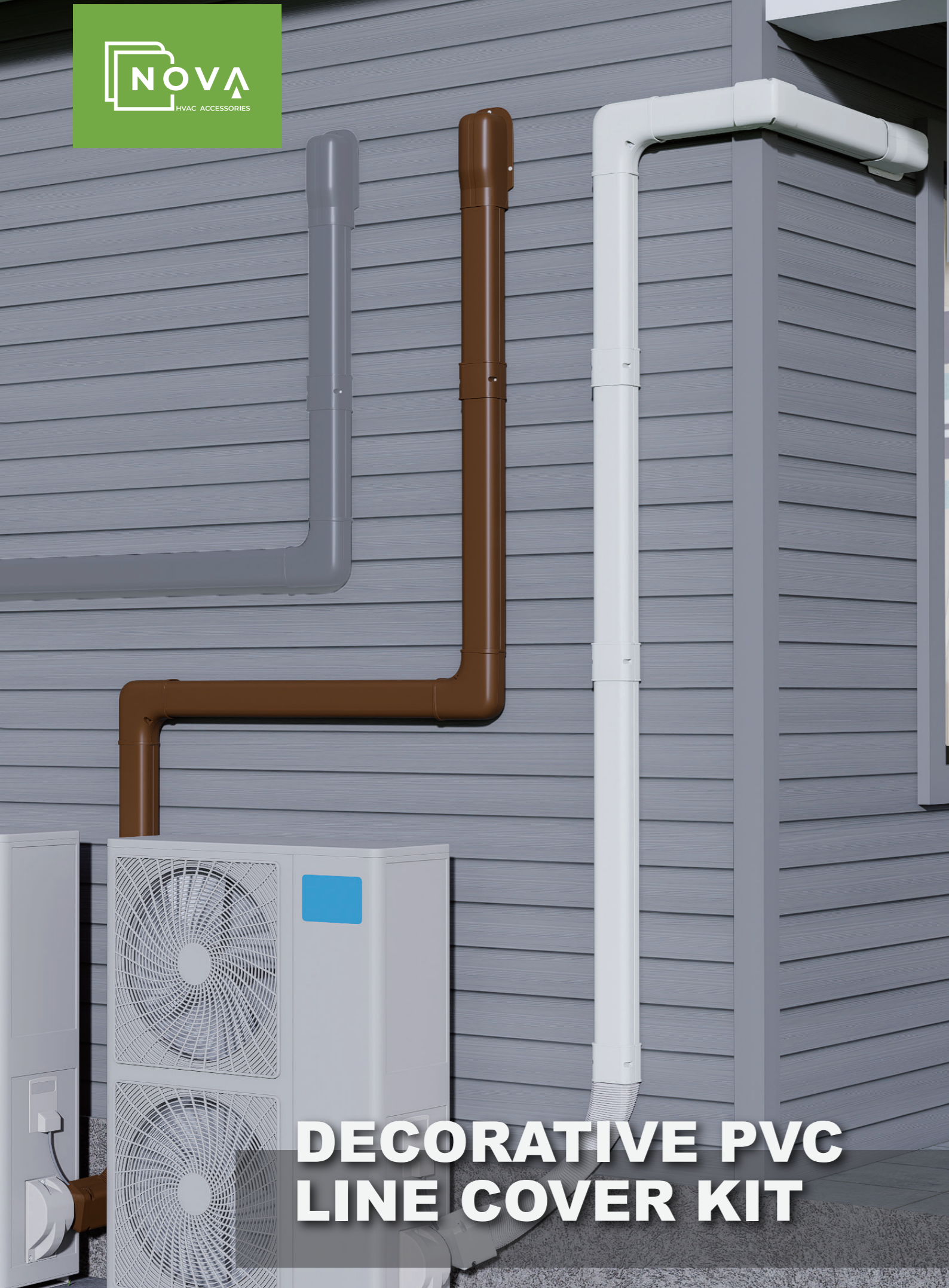


- Bracket is designed for masonry wall mount, for stud wall mount proper blocking must be made between studes to ensure proper wall bracing will accommodate bracket weight load.
- The bracket must be securely fixed to wall with all screws fastened tightly.
- Do not make any modification to bracket assembly or fixings

FEATURES

For mini split & central air conditioners and heat pumps

- Weather proof and UV resistant material
- Snap-on design for quick installation
- Alignment tabs on fittings for easy installation
- Protect lineset and tube for mini-splits, and ducted AC systems
- Paintable, stylish, fits any residential or commercial building

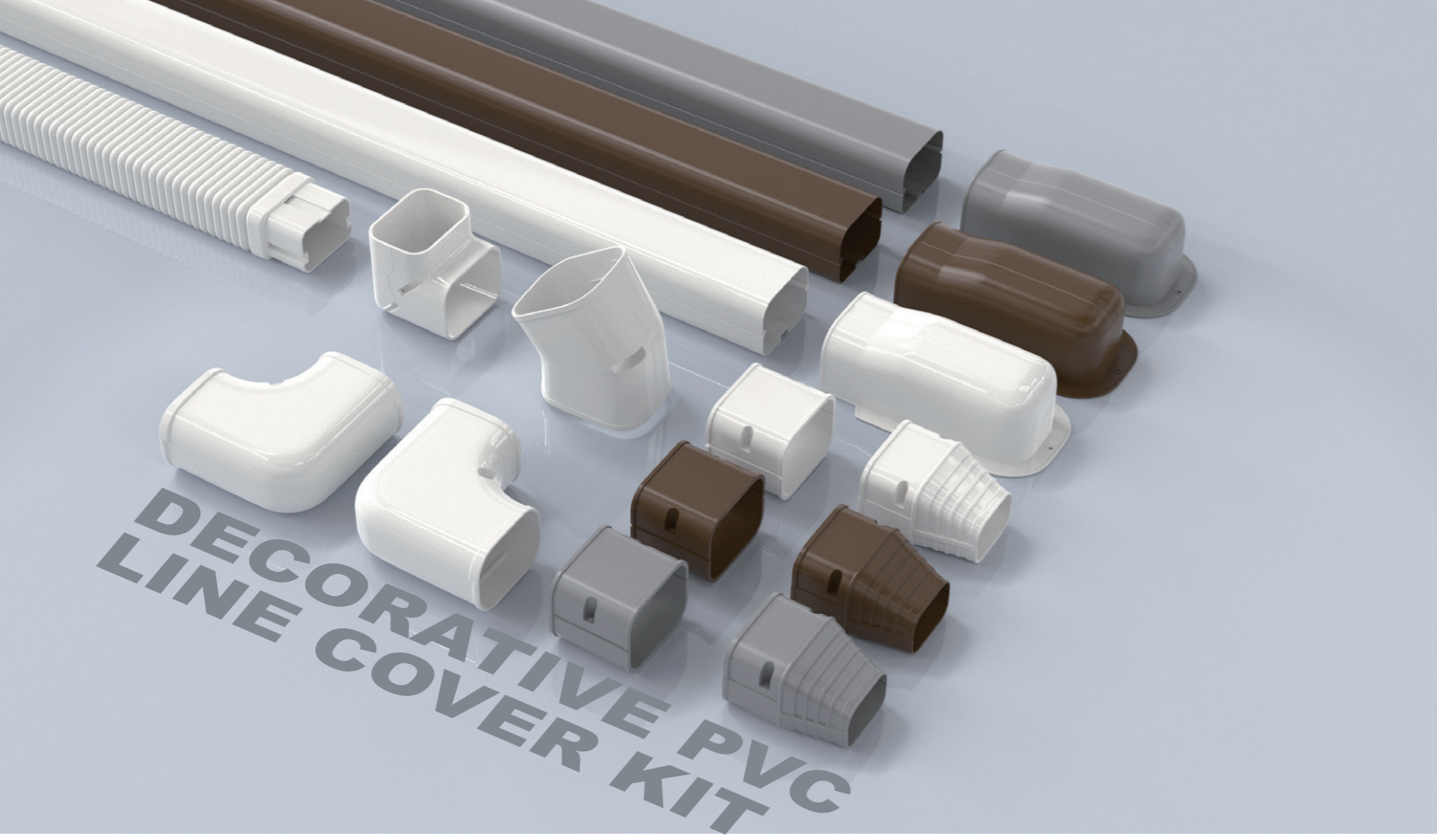


DECORATIVE PVC LINE COVER KIT

<p>Wall Inlet Cover</p>	<p>Extension Joint</p>	<p>90° Flat Elbow</p>
<p>End Cap</p>	<p>90° Elbow Bend</p>	<p>Adjustable Flat Elbow</p>
<p>Adjustable Elbow Bend</p>	<p>Ceiling Cap</p>	<p>T-joint</p>
<p>45° Elbow</p>	<p>Flexible Tube</p>	<p>Straight Duct</p>



-Recommend to sketch a diagram of the desired line set path to determine how much tubing and how many elbows, couplings and other pieces you will need.
 -Recommend to follow the Line Set Cover Capacity to ensure a smooth line set run.



Part List Available in WHITE, BROWN. Size 3", 4", 5"

Specification (3 inch)

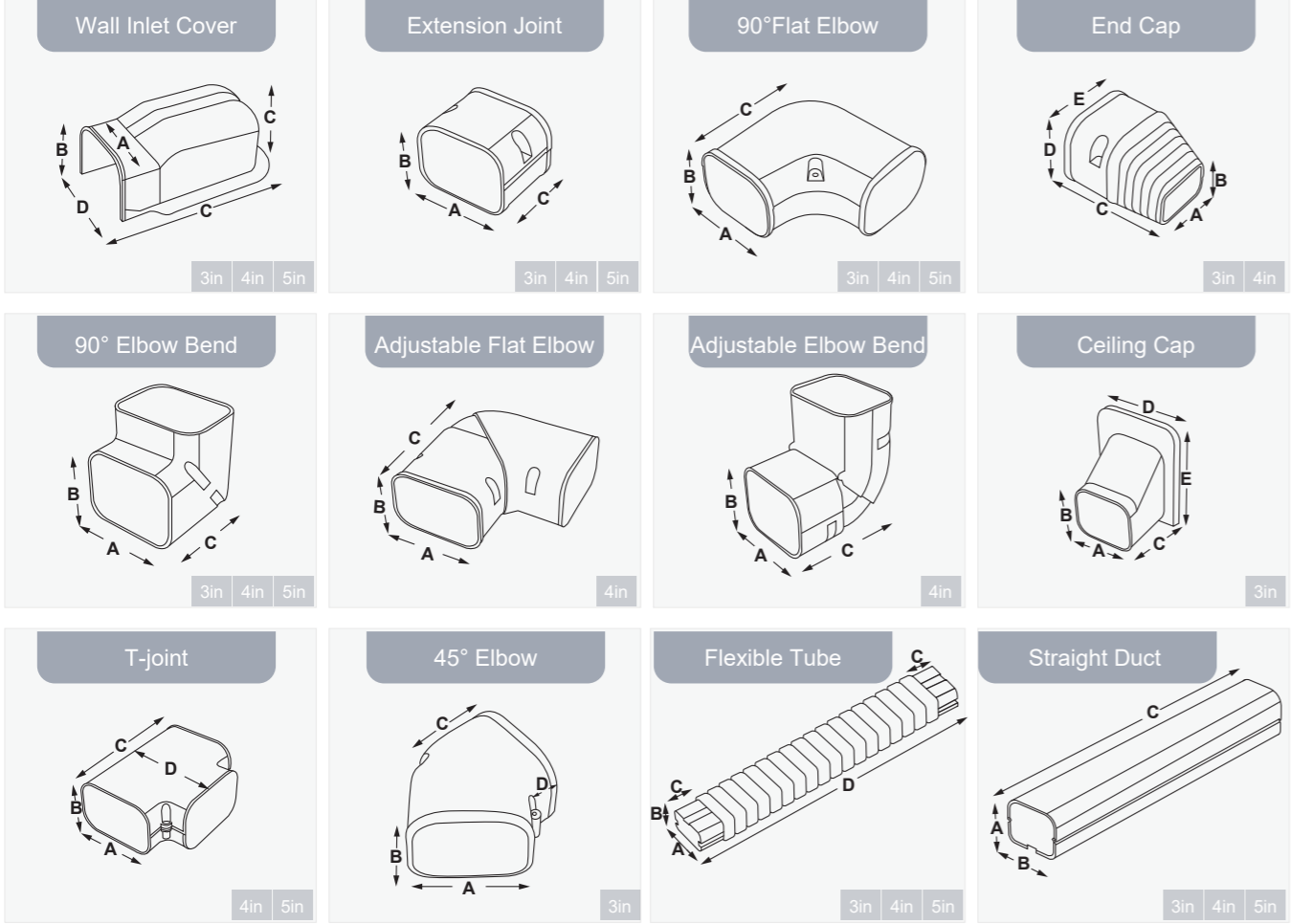
Item	Model Number	Dimension (in.)				
		A	B	C	D	E
Straight Duct	NLC301-1	2-7/8	2-3/8	39-3/8	/	/
	NLC301-2	2-7/8	2-3/8	78-3/4	/	/
	NLC301-3	2-7/8	2-3/8	118-1/8	/	/
Extension Joint	NLC302	3	2-1/2	2-1/2	/	/
Wall Inlet Cover	NLC303	3	2-1/2	7	4-1/4	3-1/8
End Cap	NLC304	2	1-3/8	3-3/4	3	2-1/2
90° Flat Elbow	NLC305	3	2-1/2	5	/	/
90° Elbow Bend	NLC306	3	2-1/2	4	/	/
Flexible Tube	NLC307	3	2-1/2	2	25	/
Ceiling Cap	NLC308	3	2-1/2	3-1/8	4-1/4	5-1/2
45° Elbow	NLC312	3	2-1/2	2-1/8	7/8	/

Specification (4 inch)

Item	Model Number	Dimension (in.)				
		A	B	C	D	E
Straight Duct	NLC401-1	3-7/8	2-1/2	39-3/8	/	/
	NLC401-2	3-7/8	2-1/2	78-3/4	/	/
	NLC401-3	3-7/8	2-1/2	118-1/8	/	/
Extension Joint	NLC402	4	2-5/8	2	/	/
Wall Inlet Cover	NLC403	4	2-3/4	8-5/8	5-1/4	3-1/4
End Cap	NLC404	3	2-1/2	4-1/4	4	2-3/4
90° Flat Elbow	NLC405	4	2-3/4	5-1/2	/	/
90° Elbow Bend	NLC406	4	2-3/4	4-1/8	/	/
Flexible Tube	NLC407	3-7/8	2-1/2	2-1/4	30	/
T-joint	NLC409	4	2-3/4	6	5-1/2	/
Adjustable Flat Elbow	NLC410	4	2-3/4	6-3/4	/	/
Adjustable Elbow Bend	NLC411	4	2-3/4	5-1/2	/	/

Specification (5 inch)

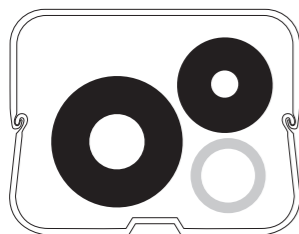
Item	Model Number	Dimension (in.)				
		A	B	C	D	E
Straight Duct	NLC501-1	4-7/8	3-3/8	39-3/8	/	/
	NLC501-2	4-7/8	3-3/8	78-3/4	/	/
	NLC501-3	4-7/8	3-3/8	118-1/8	/	/
Extension Joint	NLC502	5-1/4	3-1/2	3-1/8	/	/
Wall Inlet Cover	NLC503	5	3-5/8	9-1/4	6-5/8	4-3/4
90° Flat Elbow	NLC505	5-1/8	3-1/2	6-7/8	/	/
90° Elbow Bend	NLC506	5	3-5/8	6-3/4	/	/
Flexible Tube	NLC507	4-7/8	3-1/2	3	30-3/4	/
T-joint	NLC509	5-1/4	3-1/2	8-1/8	6-3/4	/



Note: 3inch, 4inch and 5inch added on the pictures, means those parts have corresponding specifications.

3 inch Line Set Cover

BTU - 12,000

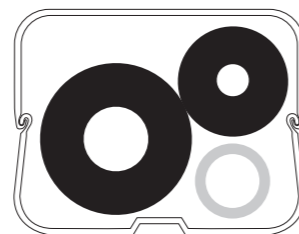


Suction Line - 1/2" OD
(Insulation) - 3/8"

Liquid Line - 1/4" OD
(Insulation) - 3/8"

Drain Hose - 3/4" PVC

BTU - 24,000

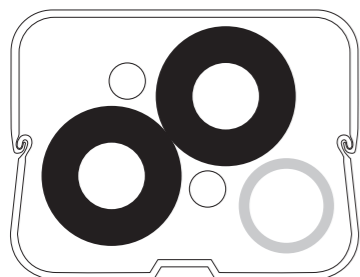


Suction Line - 1/2" OD
(Insulation) - 3/8"

Liquid Line - 1/4" OD
(Insulation) - 3/8"

Drain Hose - 3/4" PVC

4 inch Line Set Cover

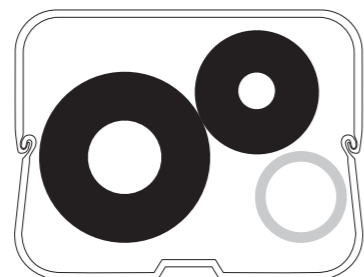


BTU - 36,000

2 X Suction Line - 3/4" OD
(Insulation) - 3/8"

2 X Liquid Line - 3/8" OD

Drain Hose - 3/4" PVC

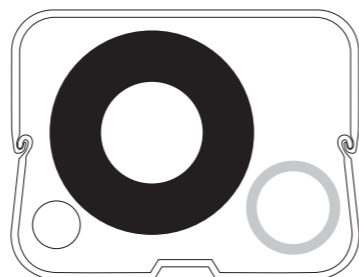


BTU - 42,000

Suction Line - 3/4" OD
(Insulation) - 1/2"

Liquid Line - 3/8" OD
(Insulation) - 1/2"

Drain Hose - 7/8" PVC



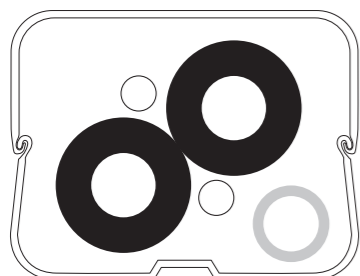
BTU - 60,000

Suction Line - 1-1/8" OD
(Insulation) - 1/2"

Liquid Line - 1/2" OD

Drain Hose - 3/4" PVC

5 inch Line Set Cover

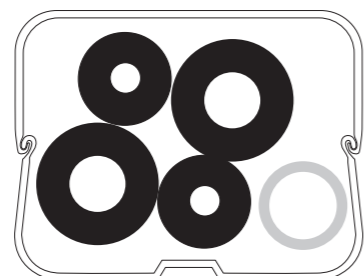


BTU - 36,000

2 X Suction Line - 3/4" OD
(Insulation) - 3/8"

2 X Liquid Line - 3/8" OD

Drain Hose - 3/4" PVC

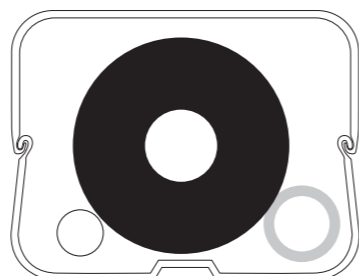


BTU - 42,000

2 X Suction Line - 3/4" OD
(Insulation) - 1/2"

2 X Liquid Line - 3/8" OD
(Insulation) - 1/2"

Drain Hose - 7/8" PVC



BTU - 60,000

Suction Line - 1-1/8" OD
(Insulation) - 1"

Liquid Line - 1/2" OD

Drain Hose - 3/4" PVC



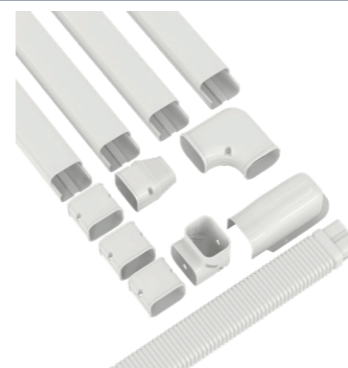
-Recommend to sketch a diagram of the desired line set path to determine how much tubing and how many elbows ,couplings and other pieces you will need.
-Recommend to follow the Line Set Cover Capacity to ensure a smooth line set run.



Combinations

- Packed with selected line set covers and connection parts
- Customized combinations available upon request

3"W x 14Ft Combinations: NLC-COM314



Parts List

39-3/8in Straight Duct	x 4
Extension Joint	x 3
End Cap	x 1
Wall Inlet Cover	x 1
90° Flat Elbow	x 1
90° Elbow Bend	x 1
Flexible Tube	x 1

4"W x 14Ft Combinations: NLC-COM414

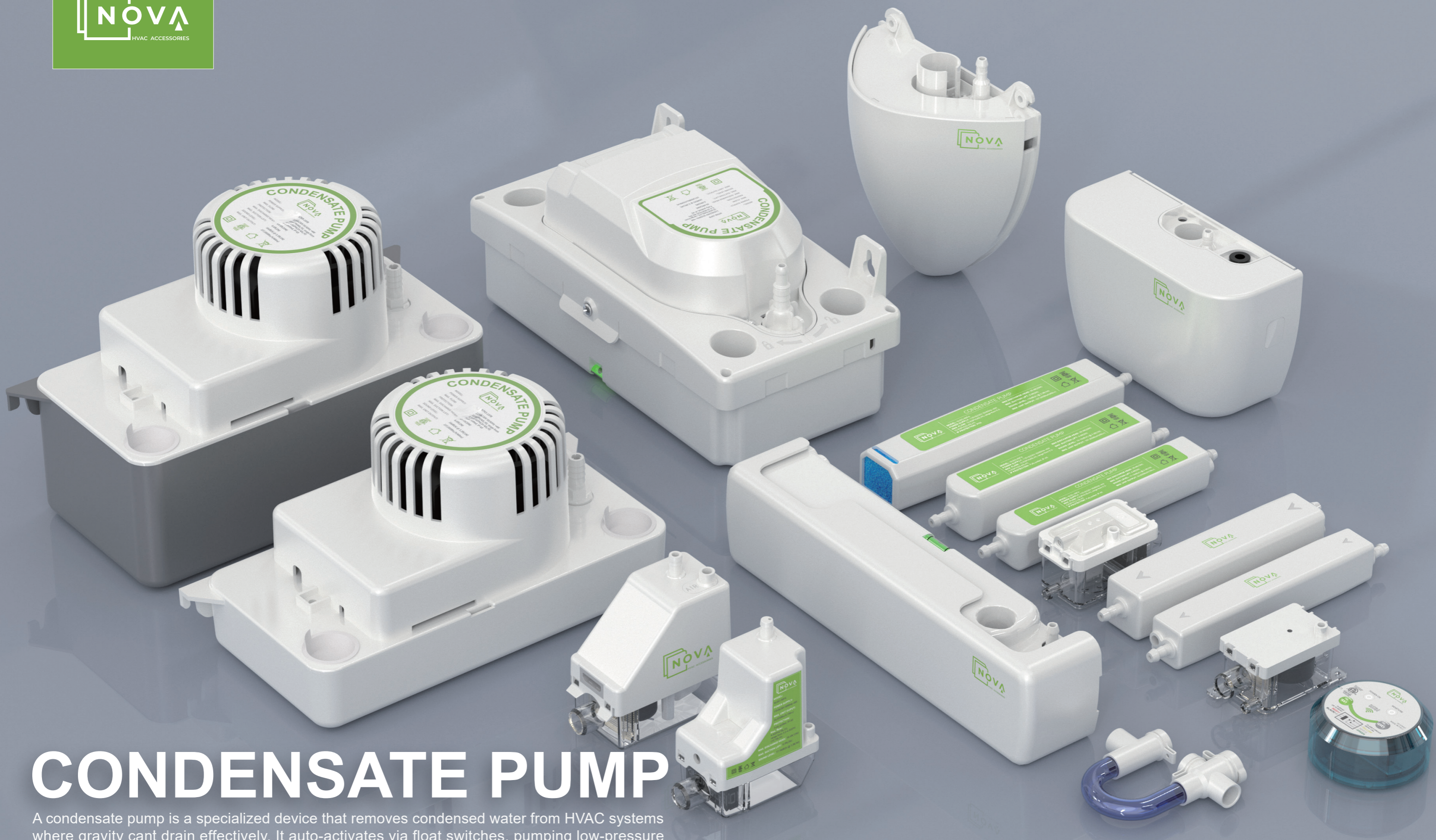


Parts List

39-3/8in Straight Duct	x 4
Extension Joint	x 4
Wall Inlet Cover	x 1
90° Flat Elbow	x 1
90° Elbow Bend	x 1
Flexible Tube	x 1



-Recommend to sketch a diagram of the desired line set path to determine how much tubing and how many elbows ,couplings and other pieces you will need.
-Recommend to follow the Line Set Cover Capacity to ensure a smooth line set run.

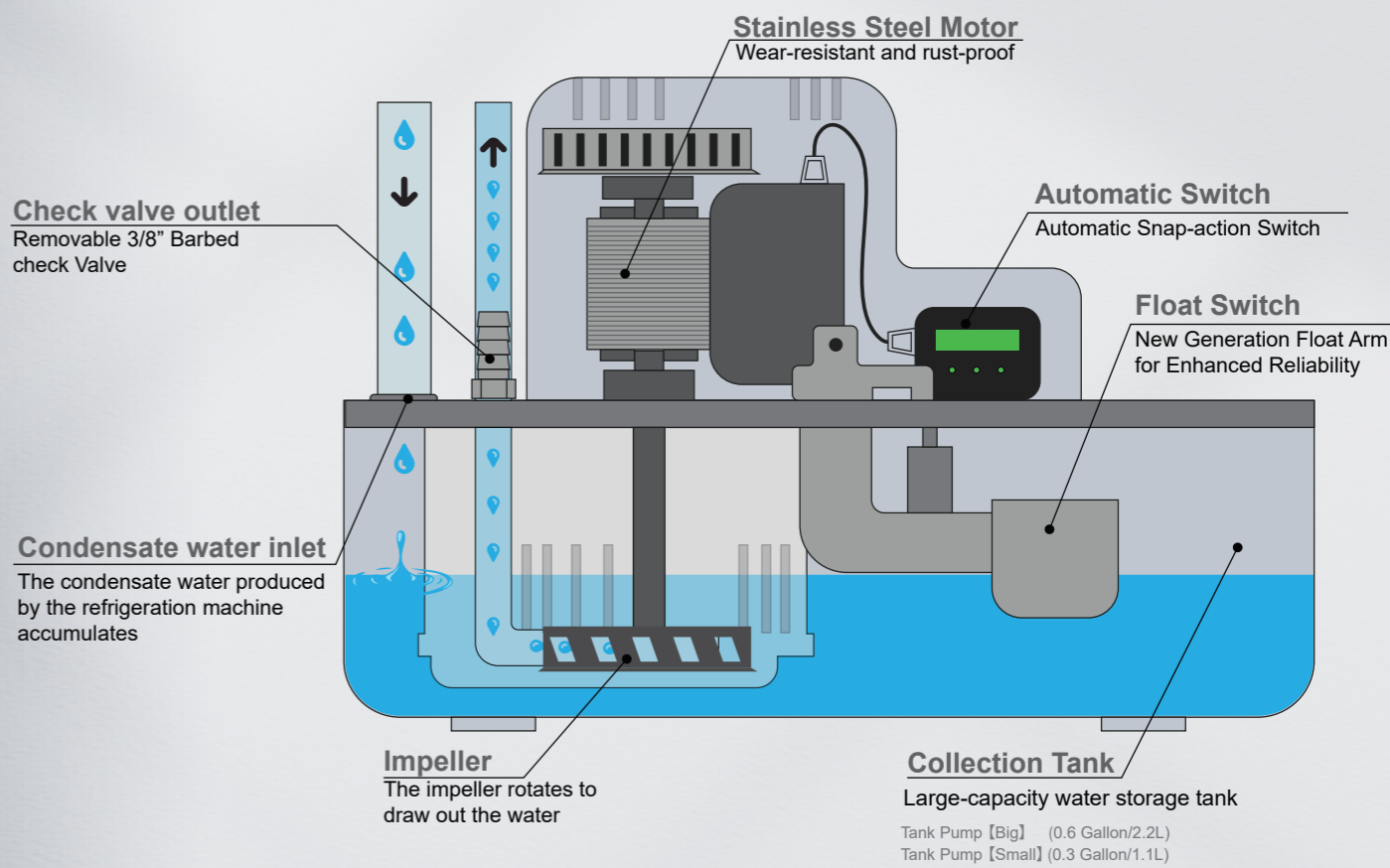
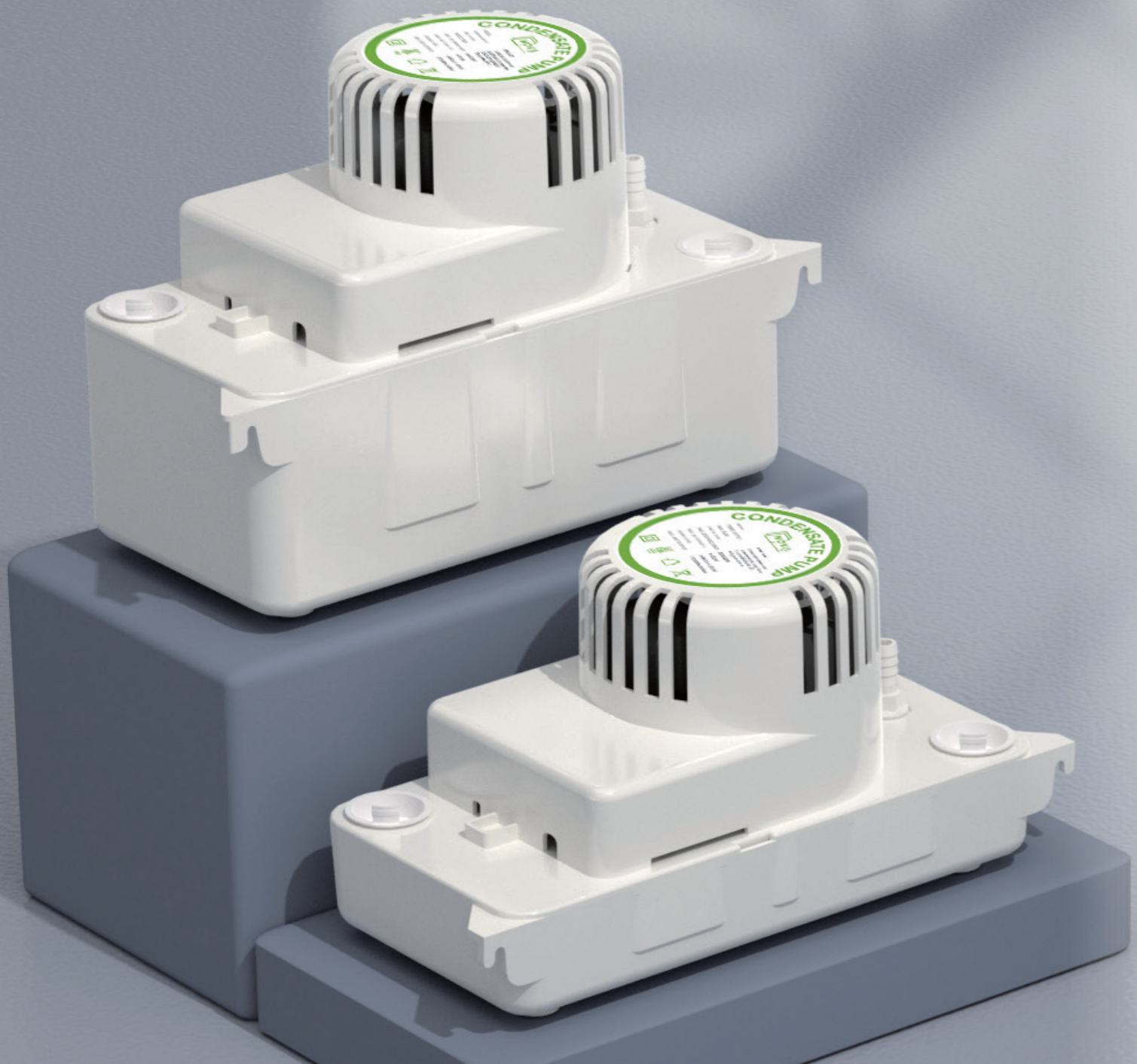


CONDENSATE PUMP

A condensate pump is a specialized device that removes condensed water from HVAC systems where gravity cant drain effectively. It auto-activates via float switches, pumping low-pressure condensate to drains/tanks by overcoming elevation/resistance. Compact and durable, it prevents backup, corrosion, or leaks, with safety features like overflow protection to ensure HVAC systems run efficiently across residential, commercial and industrial settings.



The condensate draining pump (tank pump big and tank pump small) is able to drain huge volume of condensation. It is easy to install and suitable for installations in all spaces. Standard color is white and gray, customized color is optional. There are four models for each voltage, max. discharge head range from 15ft to 24ft.



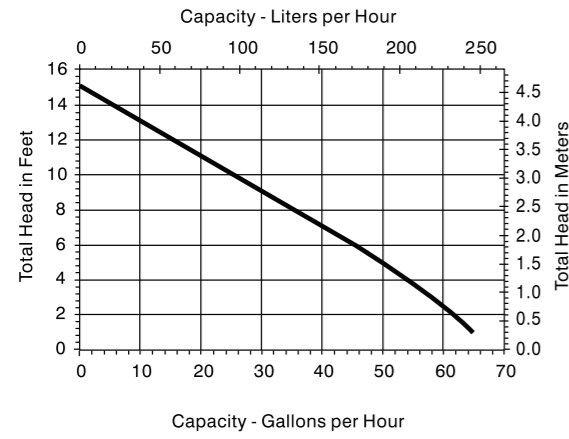
TANK PUMP [BIG/SMALL] Rustproof

- Max. Flow 66~153GPH (250~580L/H)
- Sound level 30~40dB(A) @ 3.3ft (1M)
- Max. discharge head 15~24ft (4.6~7.3M)

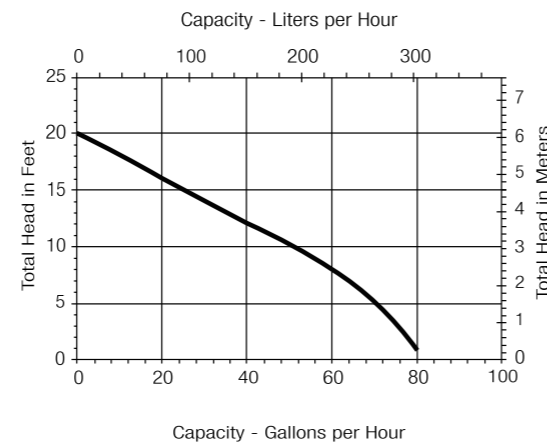


Max. discharge head

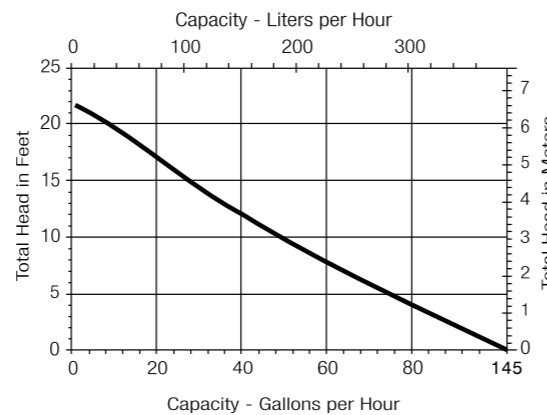
15ft (4.6M)



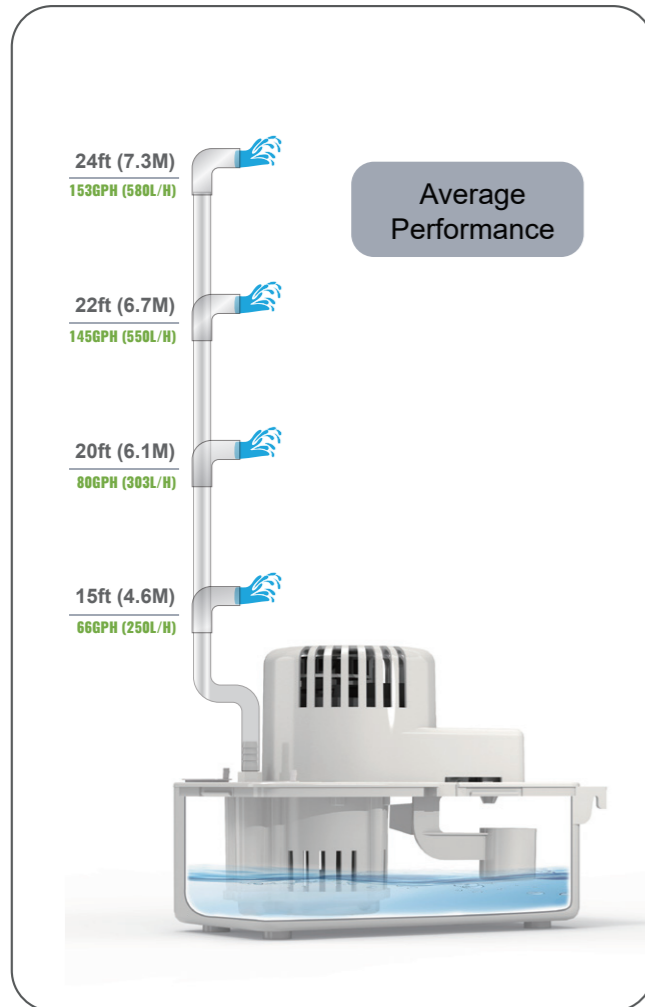
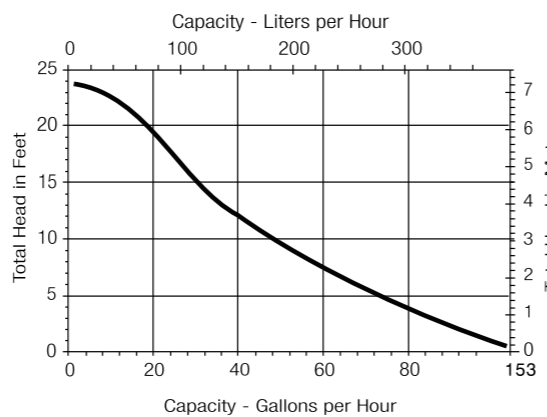
20ft (6.1M)



22ft (6.7M)



24ft (7.3M)



Tank Pump [Big]



Model	NTKB-15FB	NTKB-20FB	NTKB-22FB	NTKB-24FB
Power supply	115V/60Hz	115V/60Hz	115V/60Hz	115V/60Hz
Tank capacity	0.6 Gallon/2.2L	0.6 Gallon/2.2L	0.6 Gallon/2.2L	0.6 Gallon/2.2L
Current	1.0A	1.5A	1.85A	2.2A
Power	60W	85W	100W	110W
Max. flow	66GPH (250L/H)	80GPH (303L/H)	145GPH (550L/H)	153GPH (580L/H)
Sound level	30dB(A) @ 3.3ft(1M)	35dB(A) @ 3.3ft(1M)	40dB(A) @ 3.3ft(1M)	40dB(A) @ 3.3ft(1M)
Max. discharge head	15ft (4.6M)	20ft (6.1M)	22ft (6.7M)	24ft (7.3M)
Safety switch	3A	3A	3A	3A
Max. water temperature	140°F(60°C)	140°F(60°C)	140°F(60°C)	140°F(60°C)
Discharge tube	1/4"×3/8"	1/4"×3/8"	1/4"×3/8"	1/4"×3/8"
Class	I	I	I	I
IP Protection	IPX2	IPX2	IPX2	IPX2
LxWxH	11-1/8" × 5-1/8" × 7-1/8" 284mm × 129mm × 182mm	11-1/8" × 5-1/8" × 7-1/8" 284mm × 129mm × 182mm	11-1/8" × 5-1/8" × 7-1/8" 284mm × 129mm × 182mm	11-1/8" × 5-1/8" × 7-1/8" 284mm × 129mm × 182mm

Model	NTKB-15FM	NTKB-20FM	NTKB-22FM	NTKB-24FM
Power supply	230V/60Hz	230V/60Hz	230V/60Hz	230V/60Hz
Tank capacity	0.6 Gallon/2.2L	0.6 Gallon/2.2L	0.6 Gallon/2.2L	0.6 Gallon/2.2L
Current	0.45A	0.55A	1.0A	1.1A
Power	50W	75W	100W	110W
Max. flow	66GPH (250L/H)	80GPH (303L/H)	145GPH (550L/H)	153GPH (580L/H)
Sound level	30dB(A) @ 3.3ft(1M)	35dB(A) @ 3.3ft(1M)	40dB(A) @ 3.3ft(1M)	40dB(A) @ 3.3ft(1M)
Max. discharge head	15ft (4.6M)	20ft (6.1M)	22ft (6.7M)	24ft (7.3M)
Safety switch	3A	3A	3A	3A
Max. water temperature	140°F(60°C)	140°F(60°C)	140°F(60°C)	140°F(60°C)
Discharge tube	1/4"×3/8"	1/4"×3/8"	1/4"×3/8"	1/4"×3/8"
Class	I	I	I	I
IP Protection	IPX2	IPX2	IPX2	IPX2
LxWxH	11-1/8" × 5-1/8" × 7-1/8" 284mm × 129mm × 182mm	11-1/8" × 5-1/8" × 7-1/8" 284mm × 129mm × 182mm	11-1/8" × 5-1/8" × 7-1/8" 284mm × 129mm × 182mm	11-1/8" × 5-1/8" × 7-1/8" 284mm × 129mm × 182mm

Tank Pump [Small]



Model	NTKS-15FB	NTKS-20FB	NTKS-22FB	NTKS-24FB
Power supply	115V/60Hz	115V/60Hz	115V/60Hz	115V/60Hz
Tank capacity	0.3 Gallon/1.1L	0.3 Gallon/1.1L	0.3 Gallon/1.1L	0.3 Gallon/1.1L
Current	1.0A	1.5A	1.85A	2.2A
Power	60W	85W	100W	110W
Max. flow	66GPH (250L/H)	80GPH (303L/H)	145GPH (550L/H)	153GPH (580L/H)
Sound level	30dB(A) @ 3.3ft(1M)	35dB(A) @ 3.3ft(1M)	40dB(A) @ 3.3ft(1M)	40dB(A) @ 3.3ft(1M)
Max. discharge head	15ft (4.6M)	20ft (6.1M)	22ft (6.7M)	24ft (7.3M)
Safety switch	3A	3A	3A	3A
Max. water temperature	140°F(60°C)	140°F(60°C)	140°F(60°C)	140°F(60°C)
Discharge tube	1/4"×3/8"	1/4"×3/8"	1/4"×3/8"	1/4"×3/8"
Class	I	I	I	I
IP Protection	IPX2	IPX2	IPX2	IPX2
LxWxH	11" × 5" × 5-3/8" 278mm × 127mm × 135mm	11" × 5" × 5-3/8" 278mm × 127mm × 135mm	11" × 5" × 5-3/8" 278mm × 127mm × 135mm	11" × 5" × 5-3/8" 278mm × 127mm × 135mm

Model	NTKS-15FM	NTKS-20FM	NTKS-22FM	NTKS-24FM
Power supply	230V/60Hz	230V/60Hz	230V/60Hz	230V/60Hz
Tank capacity	0.3 Gallon/1.1L	0.3 Gallon/1.1L	0.3 Gallon/1.1L	0.3 Gallon/1.1L
Current	0.45A	0.55A	1.0A	1.1A
Power	50W	75W	100W	110W
Max. flow	66GPH (250L/H)	80GPH (303L/H)	145GPH (550L/H)	153GPH (580L/H)
Sound level	30dB(A) @ 3.3ft(1M)	35dB(A) @ 3.3ft(1M)	40dB(A) @ 3.3ft(1M)	40dB(A) @ 3.3ft(1M)
Max. discharge head	15ft (4.6M)	20ft (6.1M)	22ft (6.7M)	24ft (7.3M)
Safety switch	3A	3A	3A	3A
Max. water temperature	140°F(60°C)	140°F(60°C)	140°F(60°C)	140°F(60°C)
Discharge tube	1/4"×3/8"	1/4"×3/8"	1/4"×3/8"	1/4"×3/8"
Class	I	I	I	I
IP Protection	IPX2	IPX2	IPX2	IPX2
LxWxH	11" × 5" × 5-3/8" 278mm × 127mm × 135mm	11" × 5" × 5-3/8" 278mm × 127mm × 135mm	11" × 5" × 5-3/8" 278mm × 127mm × 135mm	11" × 5" × 5-3/8" 278mm × 127mm × 135mm

TANK PUMP PLUS

CONDENSATE PUMP

- Automatic Optical-level Sensor Switch
- 0.46 Gallon Rustproof, High Impact ABS Tank
- Discharge tube compatible with both 3/8" & 1/4"
- Optional dual alarm system for enhanced safety and reliability
- 6-foot power cord
- 4 inlets 1.1"

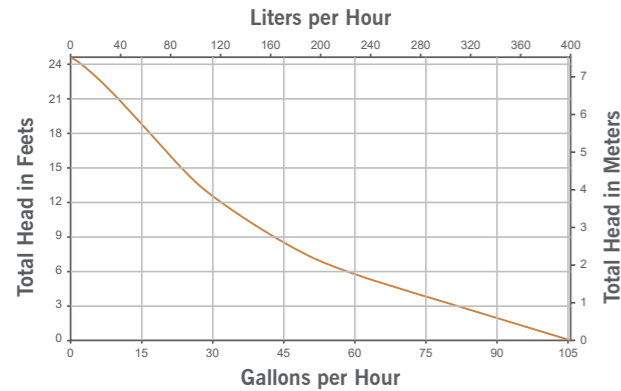
- Max. flow **155GPH(587L/H)**
- Sound level **30dB(A)@ 3.3ft (1M)**
- Max. discharge head **24ft (7.2M)**



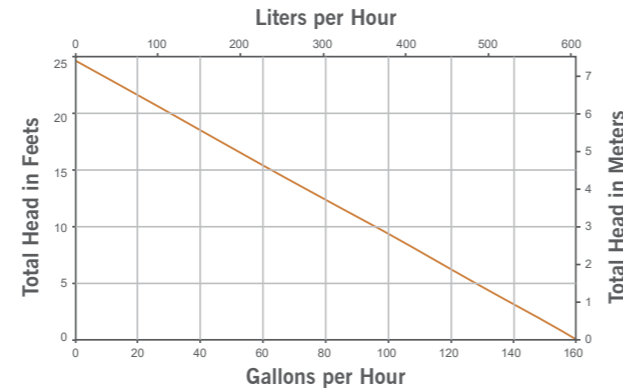
Tank Pump Plus uses photoelectric switch technology to replace the traditional micro switch. The service life of the switch is greatly increased. Tank Pump Plus is driven by a brushless DC motor, which has significant advantages over traditional AC motors, such as large flow, low noise, low energy consumption, and ultra-long service life.

TYPICAL PERFORMANCE <

1/4"(6MM) FLOW CURVE



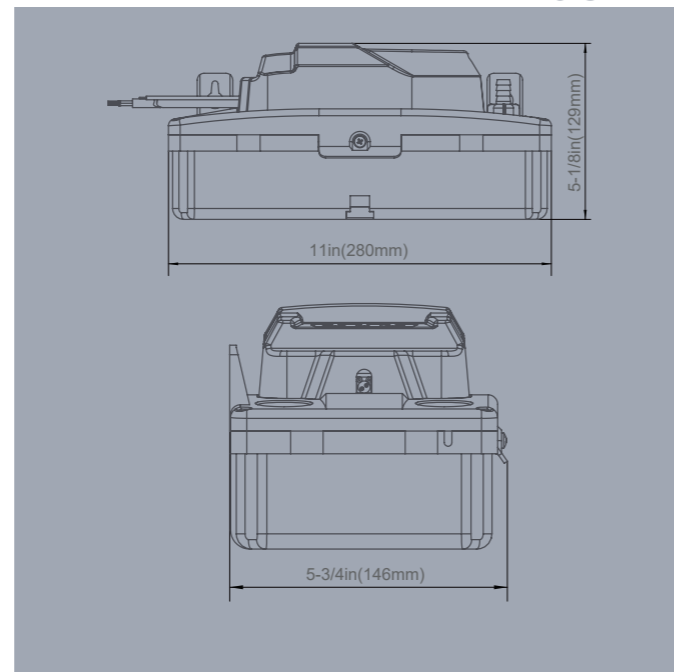
3/8"(10MM) FLOW CURVE



>TECHNICAL DATA

Model	NTKP-24FA
Power supply	115V&230V 50/60Hz
Power	50W
Max. flow	155GPH(587L/H)
Sound level	30dB(A) @ 3.3ft(1M)
Max. discharge head	24ft(7.2M)
Max. suction lift	/
Max. unit output	/
Safety switch	/
Max. water temperature	140°F(60°C)
Discharge tube	3/8in(10mm) & 1/4in(6mm) ID
Class	II appliance
Rated	Continuous
IP Protection	IP24
LxWxH	11" x 5-3/4" x 5-1/8" 280mm x 146mm x 129mm

DIMENSION <



TANK PUMP MIDDLE

CONDENSATE PUMP

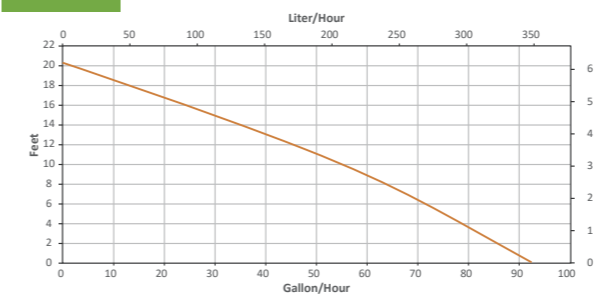
- Lower chamber design to minimize mold growth and extend the float switch travel
- Optional dual alarm system for enhanced safety and reliability
- Discharge tube compatible with both 3/8" & 1/4"
- 3 LED Indicator for Operational Status
- 0.45 Gallon Rustproof, High Impact ABS Tank
- 4 inlets 1.1"

- Max. flow **122GPH (460L/H)**
- Sound level **35dB(A) @ 3.3ft(1M)**
- Max. discharge head **20ft (6.1M)**

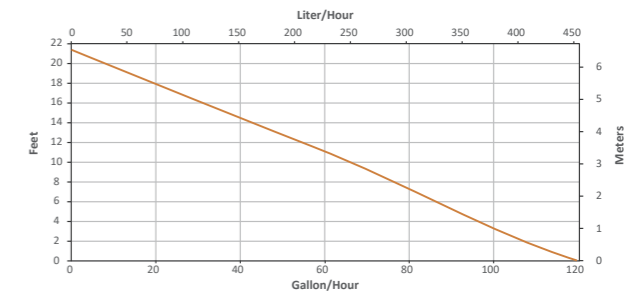


115V

1/4"(6MM) FLOW CURVE

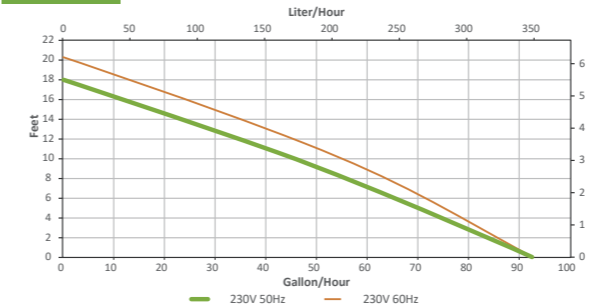


3/8"(10MM) FLOW CURVE

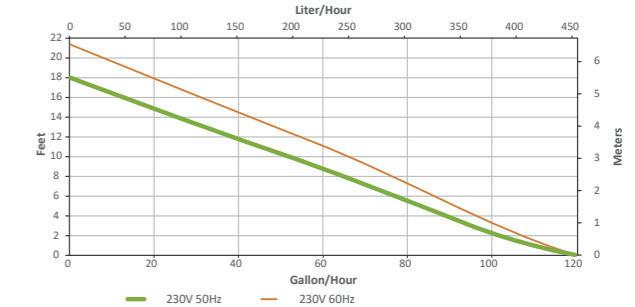


230V

1/4"(6MM) FLOW CURVE



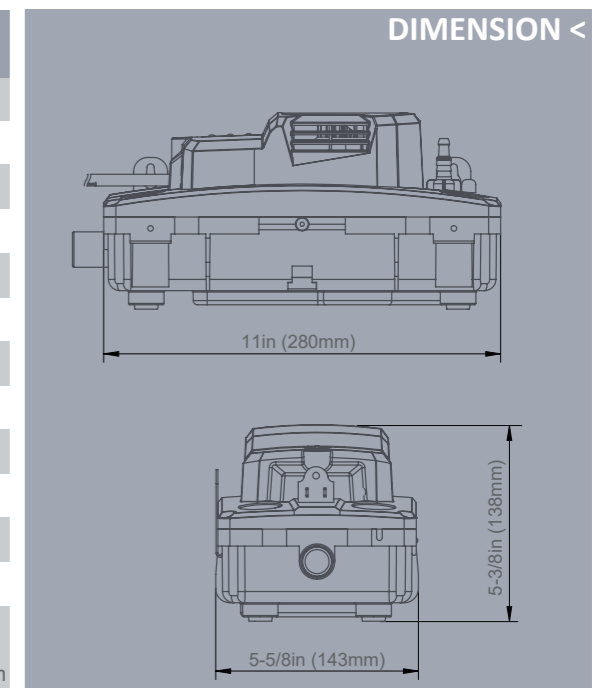
3/8"(10MM) FLOW CURVE



>TECHNICAL DATA

Model	NTKM-20FB	NTKM-20FM
Power supply	115V/60Hz	230V/60Hz
Tank capacity	0.45 Gallon/1.7L	0.45 Gallon/1.7L
Current	1.4A	0.7A
Power	75W	75W
Max. flow	122GPH (460L/H)	122GPH (460L/H)
Sound level	35dB(A) @ 3.3ft(1M)	35dB(A) @ 3.3ft(1M)
Max. discharge head	20ft (6.1M)	20ft (6.1M)
Safety switch	3A	3A
Max. water temperature	140°F(60°C)	140°F(60°C)
Discharge tube	3/8in(10mm) & 1/4in(6mm) ID	
Class	I	I
IP Protection	IP24	IP24
LxWxH	11" x 5-5/8" x 5-3/8" 280mm x 143mm x 138mm	11" x 5-5/8" x 5-3/8" 280mm x 143mm x 138mm

DIMENSION <



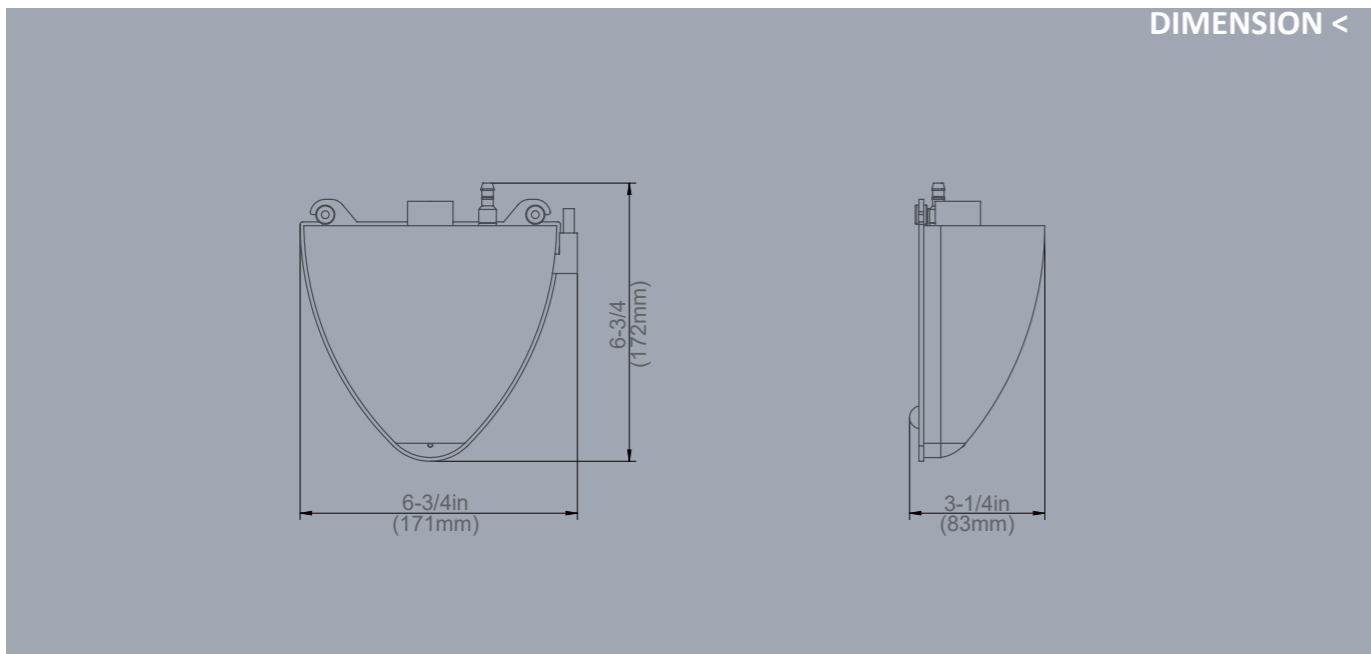
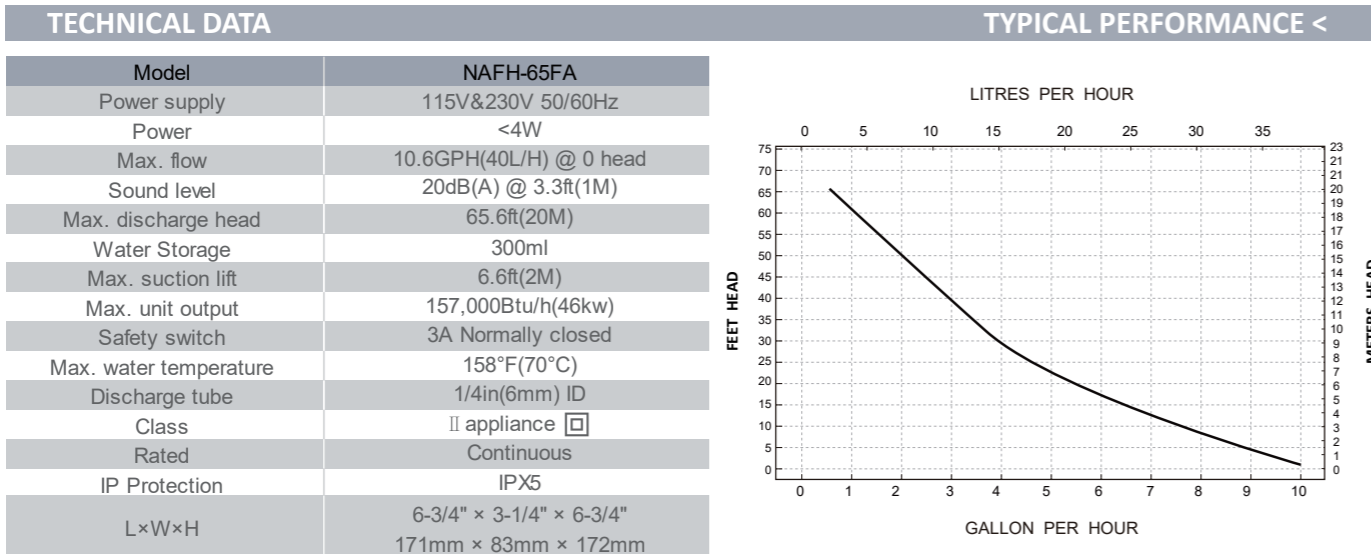
AQUAFLOW HEART

CONDENSATE PUMP



- High Performance
- Plug & Play
- Anti-vibration
- Quiet Operation
- Quick and simple installation

- Max flow **10.6GPH (40L/H)**
- Sound level **20dB(A)@ 3.3ft (1M)**
- Max. discharge head **65.6ft (20M)**



AQUAFLOW WEDGE

CONDENSATE PUMP

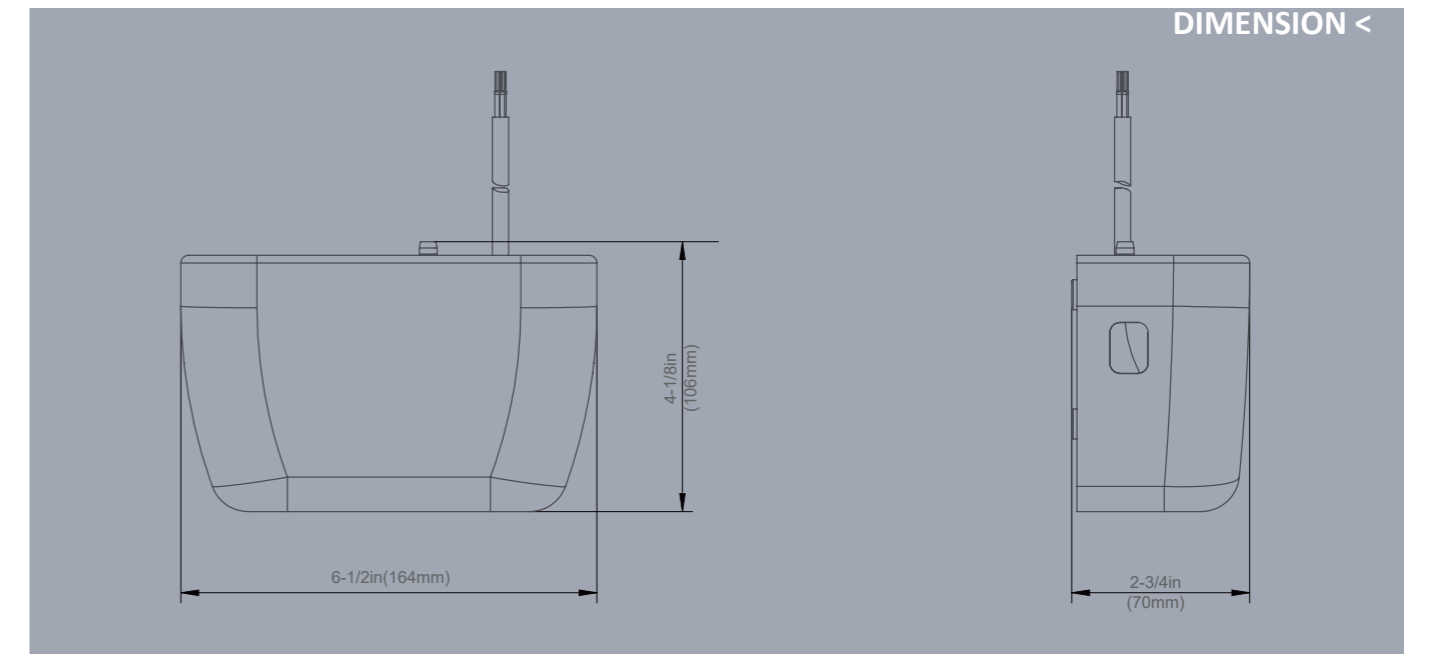
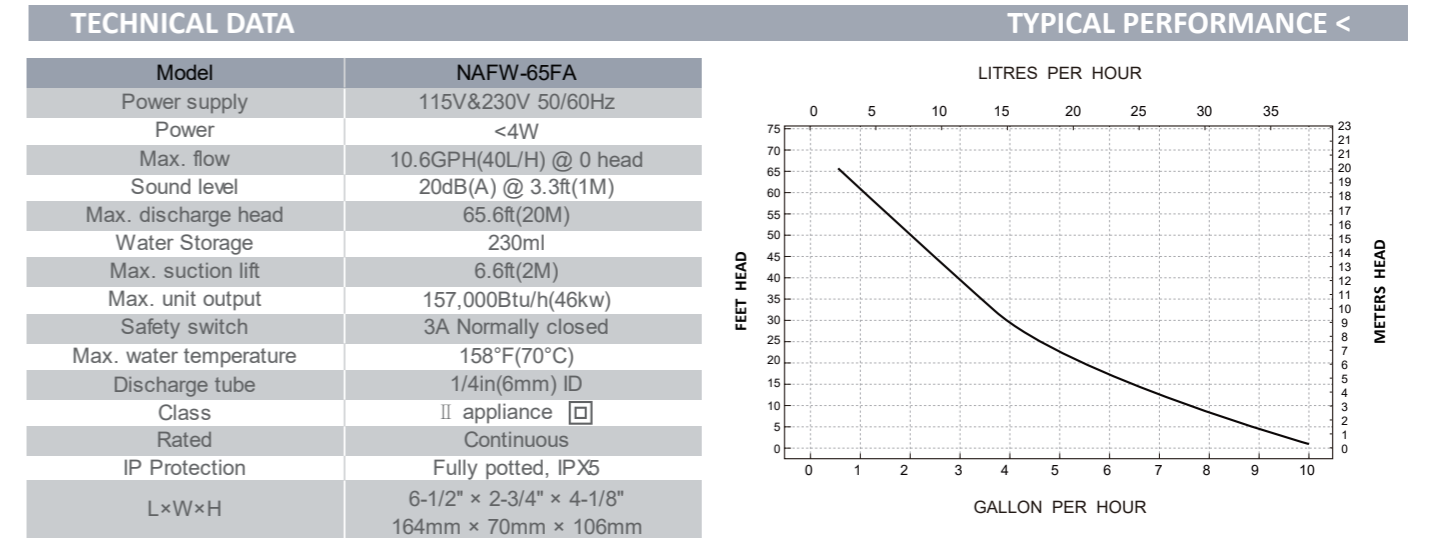


- Float Switch Detection
- High performance
- Simple and quick to install
- Anti-vibration
- Silent Operation

- Max flow **10.6GPH(40L/H) @ 0 head**
- Sound level **20dB(A) @ 3.3ft(1M)**
- Max. discharge head **65.6ft(20M)**



The sleek, compact design of the AquaFlow series pumps makes them ideal for integration with mini-split and ducted HVAC systems. Operating via float switch mechanism, AquaFlow series delivers exceptional condensate removal performance while maintaining whisper-quiet operation, ensuring optimal environmental comfort.



AQUAFLOW RECTO

CONDENSATE PUMP



- Capacitive sensor
- Variable flow rate
- Diagnostic LED
- Quick and simple installation
- Built-in operation tracking
- Ultra-quiet operation
- Up to 157,000 Btu/h / 46 kw

- Max flow **10.6GPH (40L/H)**
- Sound level **16dB(A)@ 3.3ft (1M)**
- Max. discharge head **65.6ft (20M)**

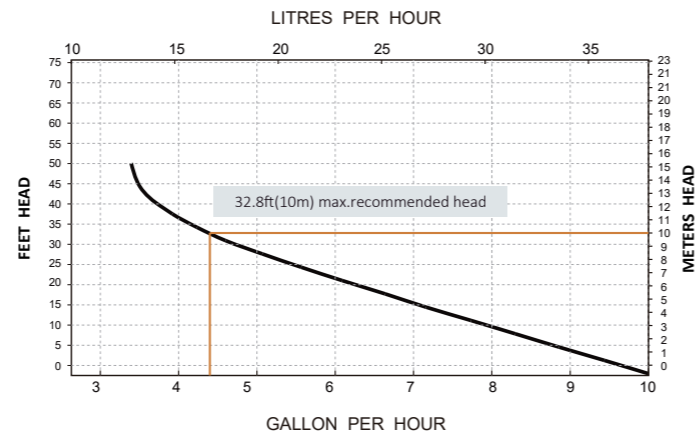


The Aquaflow Recto features a capacitive sensor for water detection, enhancing reliability over traditional float switches. Its soft-start mode minimizes startup noise and extends the lifespan of the pump and electronic components. A built-in counter tracks operating time and provides alarm notifications for optimal maintenance.

> TECHNICAL DATA

TYPICAL PERFORMANCE <

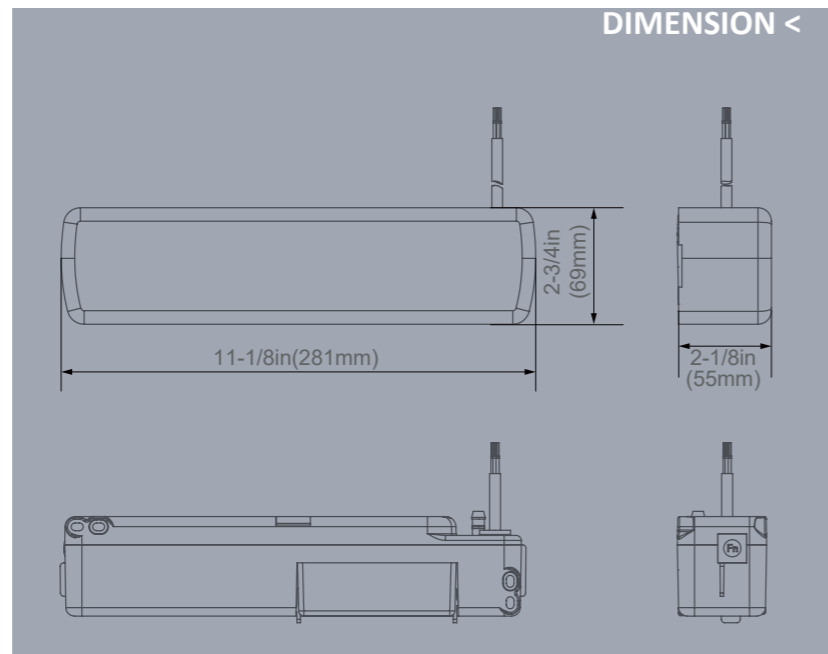
Model	NAFR-65FA
Power supply	115V&230V 50/60Hz
Power	<4W
Max. flow	10.6GPH(40L/H), range from 5.3-10.6GPH(20-40L/H)
Sound level	16dB(A) @ 3.3ft(1M)
Max. discharge head	65.6ft(20M)
Max. suction lift	6.6ft(2M)
Max. unit output	157,000Btu/h(46kw)
Safety switch	3A Normally closed
Max. water temperature	104°F(40°C)
Discharge tube	1/4in(6mm) ID
Class	II appliance <input type="checkbox"/>
Rated	Continuous
IP Protection	Fully potted, IP-45
LxWxH	11-1/8" x 2-1/8" x 2-3/4" 281mm x 55mm x 69mm



> IN THE BOX

- 1A fuse **x1**
- Installation screw **x2**
- Expansion plug **x2**
- Level gauge **x1**
- Connection clamp **x1**
- Nylon clamps 200mmx4mm **x2**
- Drilling schematic template **x1**
- Anti-siphon valve **x1**

DIMENSION <



UNSEEN DEEPSEA

CONDENSATE PUMP



- Capacitive sensor
- Variable flow rate
- Diagnostic LED
- Submersible in Condensate Pans
- Built-in operation tracking
- Ultra-quiet operation
- Up to 157,000 Btu/h / 46 kw

- Max flow **10.6GPH (40L/H)**
- Sound level **19dB(A) @ 3.3ft(1M)**
- Max. discharge head **65.6ft (20M)**

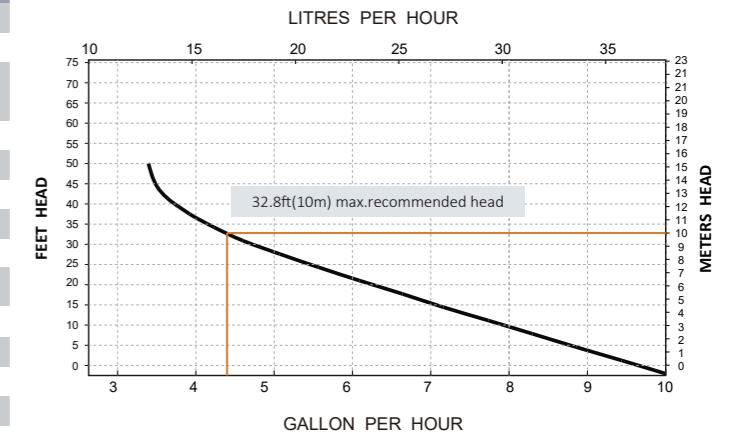


The Unseen Deepsea features a capacitive sensor for water detection, enhancing reliability over traditional float switches. Its soft-start mode minimizes startup noise and extends the lifespan of the pump and electronic components. Completely-sealed design with IP68 protection grade makes Unseen Deepsea submersible in condensate trays/pans, with high pumping capacity.

TECHNICAL DATA

TYPICAL PERFORMANCE <

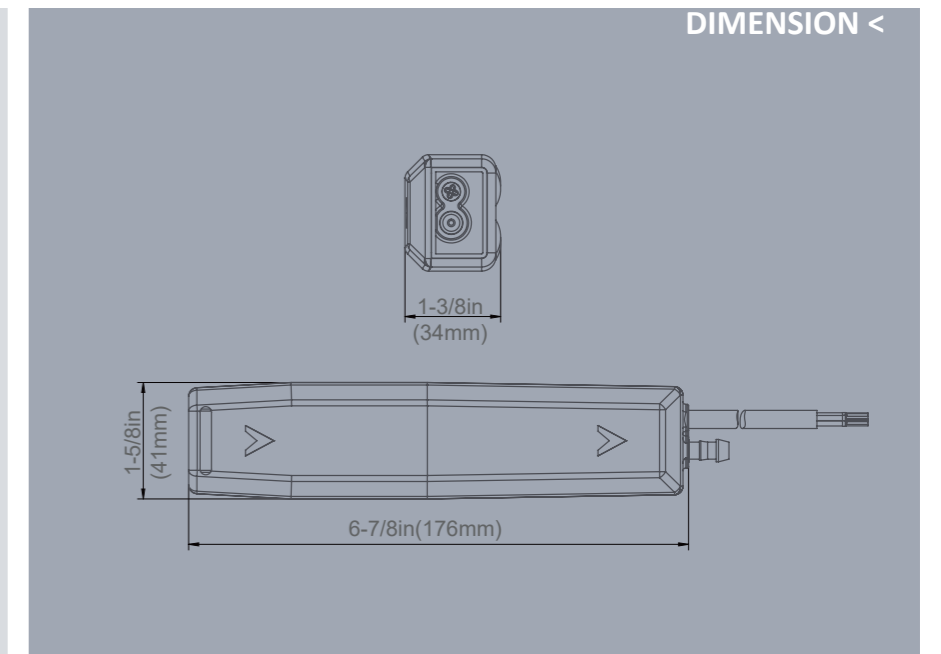
Model	NUSD-65FA
Power supply	115V&230V 50/60Hz
Power	<4W
Max. flow	10.6GPH(40L/H), range from 5.3-10.6GPH(20-40L/H)
Sound level	19dB(A) @ 3.3ft(1M)
Max. discharge head	65.6ft(20M)
Max. suction lift	6.6ft(2M)
Max. unit output	157,000Btu/h(46kw)
Safety switch	3A Normally closed
Max. water temperature	104°F(40°C)
Discharge tube	1/4in(6mm) ID
Class	II appliance <input type="checkbox"/>
Rated	Continuous
IP Protection	IP68
LxWxH	6-7/8" x 1-3/8" x 1-5/8" 176mm x 34mm x 41mm



> IN THE BOX

- Assembled Unseen Deepsea
- 1.5m length of 6mm i/d vinyl tube
- Power cable
- 1A fuse
- Anti-siphon valve
- Check valve
- Nylon clamps 4x200mmx4mm

DIMENSION <



UNSEEN LINEAR

- Capacitive sensor
- Variable flow rate
- Diagnostic LED
- Slim design for easy installation
- Built-in operation tracking
- Ultra-quiet operation
- Up to 54,600 Btu/h / 16 kw

- Max flow **4.8GPH (18L/H)**
- Sound level **17-19dB(A) @ 3.3ft(1M)**
- Max. discharge head **39.4ft(12M)**



CONDENSATE PUMP

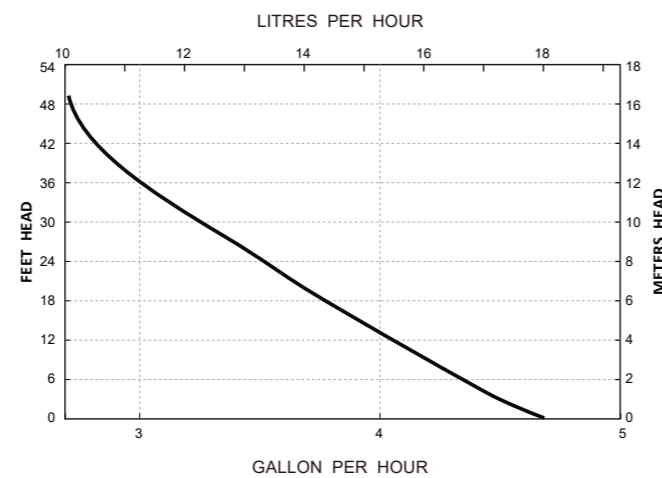


The Unseen Linear features a capacitive sensor for water detection, enhancing reliability over traditional float switches. Its soft-start mode minimizes startup noise and extends the lifespan of the pump and electronic components. A built-in counter tracks operating time and provides alarm notifications for optimal maintenance.

> TECHNICAL DATA

Model	NUSL-39FA
Power supply	115V&230V 50/60Hz
Power	<4W
Max. flow	4.8GPH(18L/H), range from 3.2-4.8GPH(12-18L/H)
Sound level	17-19dB(A) @ 3.3ft(1M)
Max. discharge head	39.4ft(12M)
Max. suction lift	6.6ft(2M)
Max. unit output	54,600Btu/h(16kw)
Safety switch	3A Normally closed
Max. water temperature	104°F(40°C)
Discharge tube	1/4in(6mm) ID
Class	II appliance <input type="checkbox"/>
Rated	Continuous
IP Protection	Fully potted, IP-45
L×W×H	7-3/8" × 1-1/8" × 1-1/8" 187mm × 29mm × 29mm

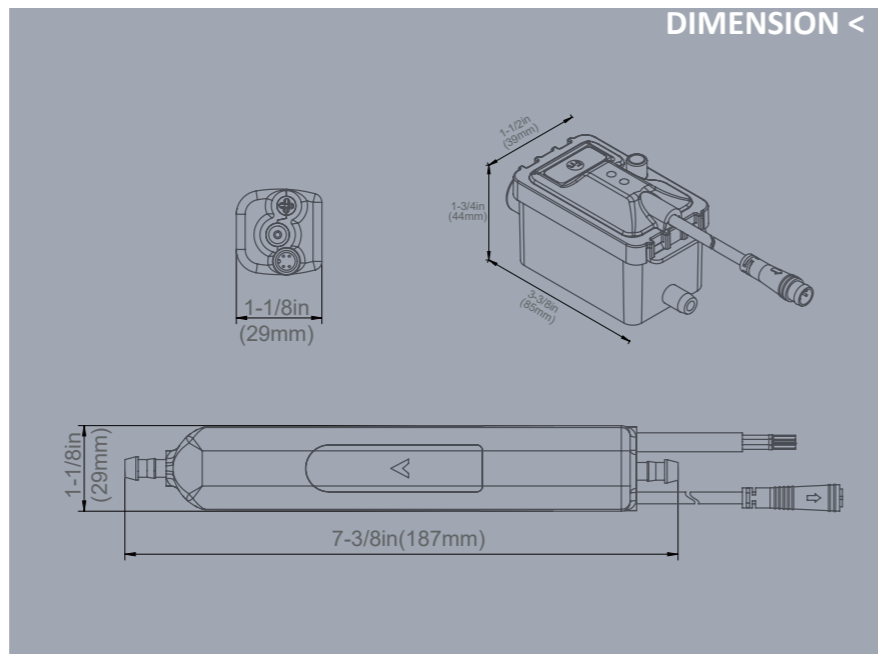
TYPICAL PERFORMANCE <



> IN THE BOX

- Assembled Unseen Linear
- Assembled inline
- Plug connector
- 1.5m length of 6mm i/d vinyl tube
- Silicone tube 15cm
- Power cable
- 1A fuse
- Anti-siphon valve
- Check valve
- 3M tape 2×50mm×20mm×1mm
- 3M tape 1×50mm×20mm×2.5mm
- Nylon clamps 4×200mm×4mm

DIMENSION <



UNSEEN LINEAR-F



CONDENSATE PUMP

- Float Switch Detection
- Plug & Play
- Slim design to fit various installation methods
- Anti-vibration
- Silent Operation

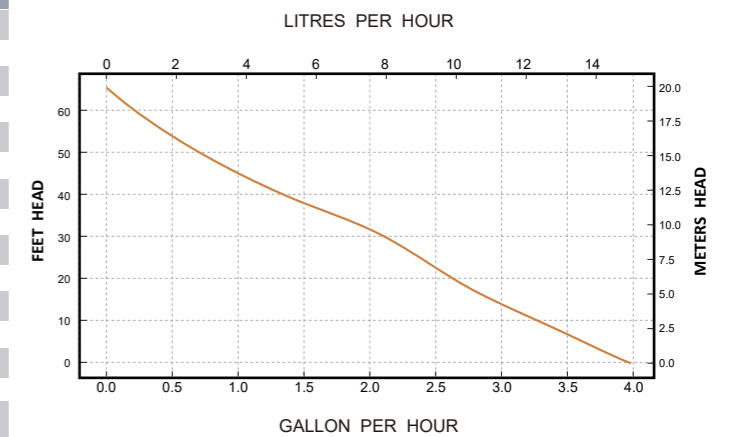
- Max flow **4GPH(15L/H) @ 0 head**
- Sound level **19dB(A) @ 3.3ft(1M)**
- Max. discharge head **39.4ft(12M)**

The sleek, compact design of the Unseen series pumps makes them ideal for integration with mini-split and ducted HVAC systems. Operating via float switch mechanism, Unseen series delivers exceptional condensate removal performance while maintaining whisper-quiet operation, ensuring optimal environmental comfort.

TECHNICAL DATA

Model	NUSL-39FA-F
Power supply	115V&230V 50/60Hz
Power	<4W
Max. flow	4GPH(15L/H) @ 0 head
Sound level	19dB(A) @ 3.3ft(1M)
Max. discharge head	39.4ft(12M)
Water Storage	40ml
Max. suction lift	6.6ft(2M)
Max. unit output	95,550Btu/h(28kw)
Safety switch	3A Normally closed
Max. water temperature	158°F(70°C)
Discharge tube	1/4in(6mm) ID
Class	II appliance <input type="checkbox"/>
Rated	Continuous
IP Protection	IPX5
L×W×H	7-3/8" × 1-1/8" × 1-1/8" 187mm × 29mm × 27mm

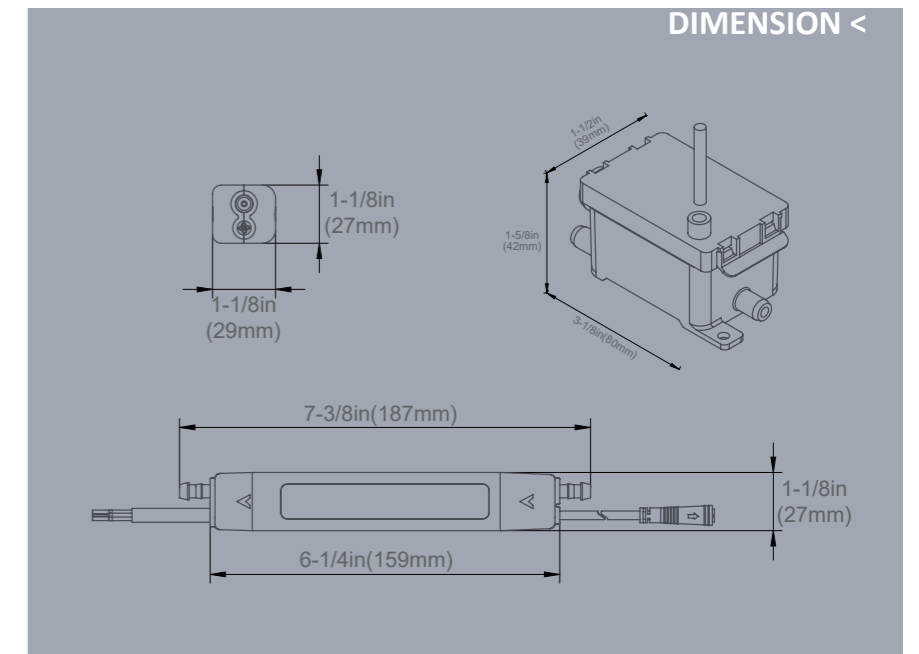
TYPICAL PERFORMANCE <



> IN THE BOX

- Assembled Unseen Linear-F
- 6mm i/d vinyl tube
- Assembled Inline reservoir
- 1.5m length of 6mm i/d vinyl tube
- Inlet tube
- 2 x self adhesive velcro strips
- Check valve
- Anti-siphon valve
- Power cable
- 4×200mm×5mm cable ties

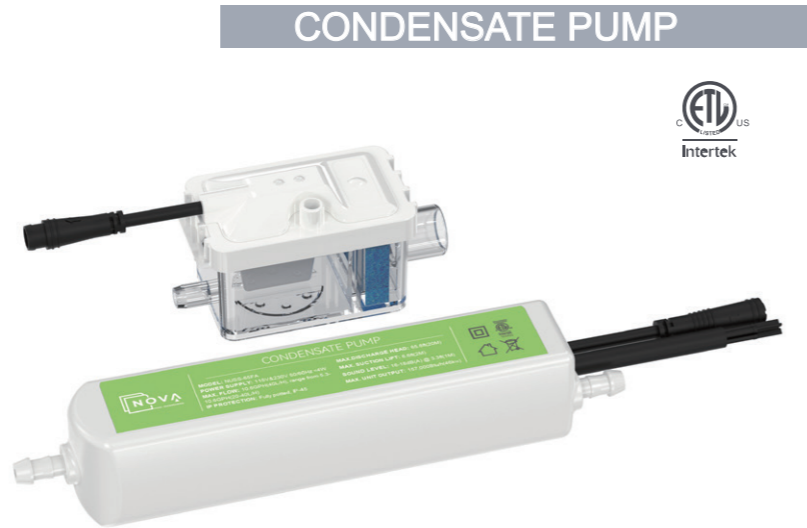
DIMENSION <



UNSEEN SLIM

- Capacitive sensor
- Variable flow rate
- Diagnostic LED
- Powerful performance
- Built-in operation tracking
- Ultra-quiet operation
- Up to 157,000 Btu/h / 46 kw

- Max. flow **10.6GPH (40L/H)**
- Sound level **16-18dB(A) @ 3.3ft(1M)**
- Max. discharge head **65.6ft(20M)**



CONDENSATE PUMP

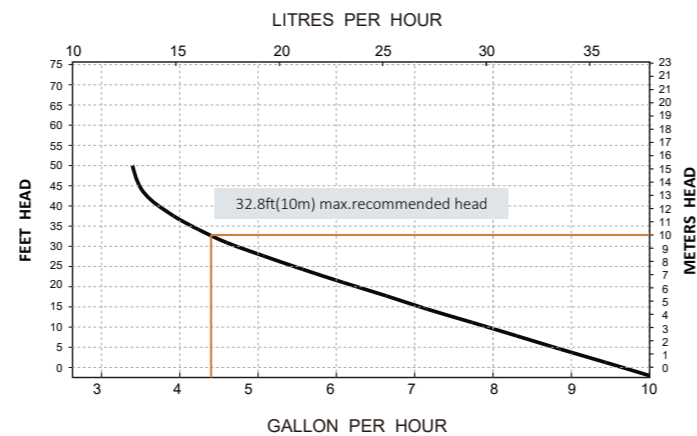


The Unseen Slim features a capacitive sensor for water detection, enhancing reliability over traditional float switches. Its soft-start mode minimizes startup noise and extends the lifespan of the pump and electronic components. A built-in counter tracks operating time and provides alarm notifications for optimal maintenance.

> TECHNICAL DATA

Model	NUSS-65FA
Power supply	115V&230V 50/60Hz
Power	<4W
Max. flow	10.6GPH(40L/H), range from 5.3-10.6GPH(20-40L/H)
Sound level	16-18dB(A) @ 3.3ft(1M)
Max. discharge head	65.6ft(20M)
Max. suction lift	6.6ft(2M)
Max. unit output	157,000Btu/h(46kw)
Safety switch	3A Normally closed
Max. water temperature	104°F(40°C)
Discharge tube	1/4in(6mm) ID
Class	II appliance <input type="checkbox"/>
Rated	Continuous
IP Protection	Fully potted, IP-45
LxWxH	7-1/8" x 1-3/8" x 1-1/4" 180mm x 35mm x 33mm

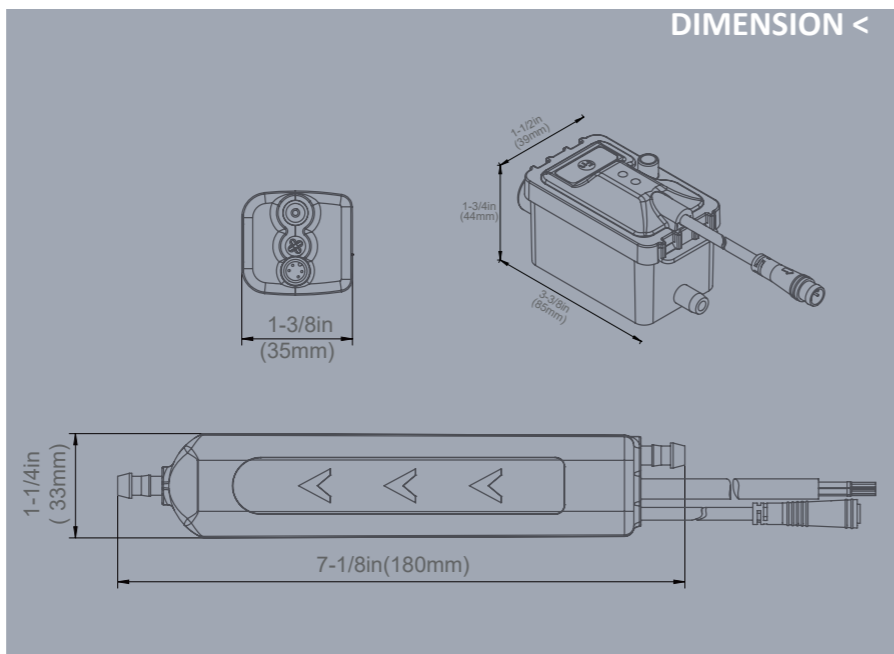
TYPICAL PERFORMANCE <



> IN THE BOX

- Assembled Unseen Slim
- Assembled inline reservoir
- Plug connector
- 1.5m length of 6mm i/d vinyl tube
- Silicone tube 15cm
- Power cable
- 1A fuse
- Anti-siphon valve
- Check valve
- 3M tape 2x50mmx20mmx1mm
- 3M tape 1x50mmx20mmx2.5mm
- Nylon clamps 4x200mmx4mm

DIMENSION <



UNSEEN SLIM-F



CONDENSATE PUMP

- Float Switch Detection
- Plug & Play
- High performance
- Anti-vibration
- Silent Operation

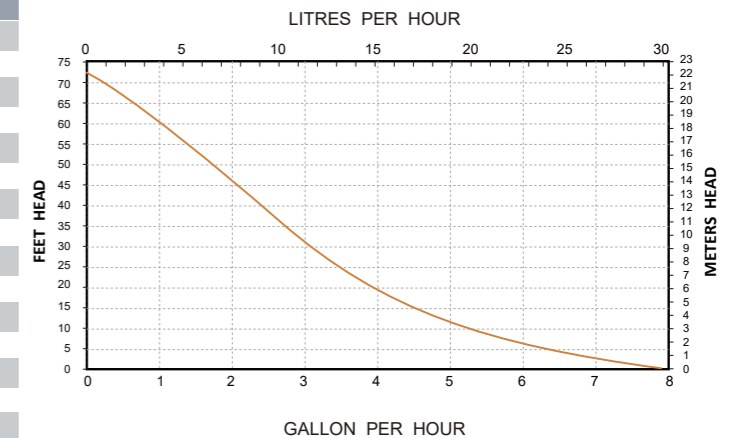
- Max flow **10.6GPH(40L/H) @ 0 head**
- Sound level **20dB(A) @ 3.3ft(1M)**
- Max. discharge head **65.6ft(20M)**

The sleek, compact design of the Unseen series pumps makes them ideal for integration with mini-split and ducted HVAC systems. Operating via float switch mechanism, Unseen series delivers exceptional condensate removal performance while maintaining whisper-quiet operation, ensuring optimal environmental comfort.

> TECHNICAL DATA

Model	NUSS-65FA-F
Power supply	115V&230V 50/60Hz
Power	<4W
Max. flow	10.6GPH(40L/H) @ 0 head
Sound level	20dB(A) @ 3.3ft(1M)
Max. discharge head	65.6ft(20M)
Water Storage	40ml
Max. suction lift	6.6ft(2M)
Max. unit output	157,000Btu/h(46kw)
Safety switch	3A Normally closed
Max. water temperature	158°F(70°C)
Discharge tube	1/4in(6mm) ID
Class	II appliance <input type="checkbox"/>
Rated	Continuous
IP Protection	Fully potted, IPX5
LxWxH	7-1/8" x 1-3/8" x 1-1/4" 180mm x 35mm x 32mm

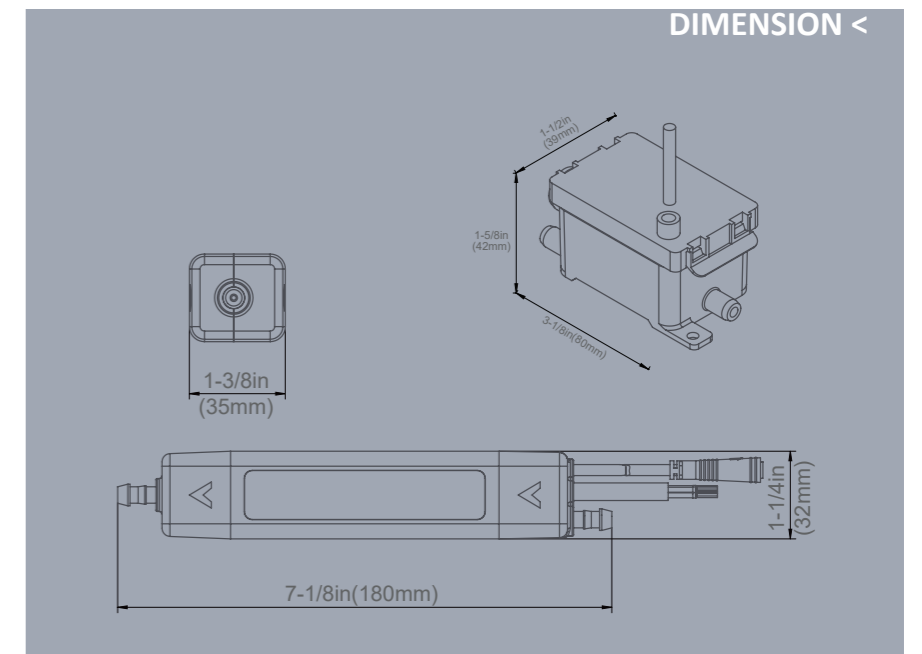
TYPICAL PERFORMANCE <



> IN THE BOX

- Assembled Unseen Slim-F
- 6mm i/d vinyl tube
- Assembled inline reservoir
- 1.5m length of 6mm i/d vinyl tube
- Inlet tube
- Self adhesive velcro strips x 2
- Anti-siphon valve
- Check valve
- Power cable
- 4 x 200mm x 5mm cable ties

DIMENSION <



UNSEEN CORNER

- Capacitive sensor
- Variable flow rate
- Diagnostic LED
- Reset function
- Built-in operation tracking
- Installed in trunking elbow
- Up to 54,600 Btu/h / 16 kw

- Max. flow **4.8GPH (18L/H)**
- Sound level **17-19dB(A) @ 3.3ft(1M)**
- Max. discharge head **39.4ft(12M)**

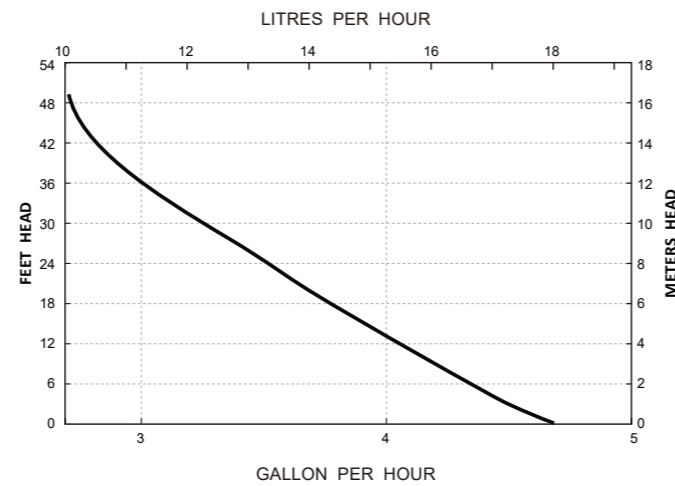


The Unseen Corner uses a capacitive sensor for water detection, enhancing reliability over traditional float switches. Its soft-start mode minimizes startup noise and extends the lifespan of the pump and electronic components. A built-in counter tracks operating time and provides alarm notifications for optimal maintenance.

TECHNICAL DATA

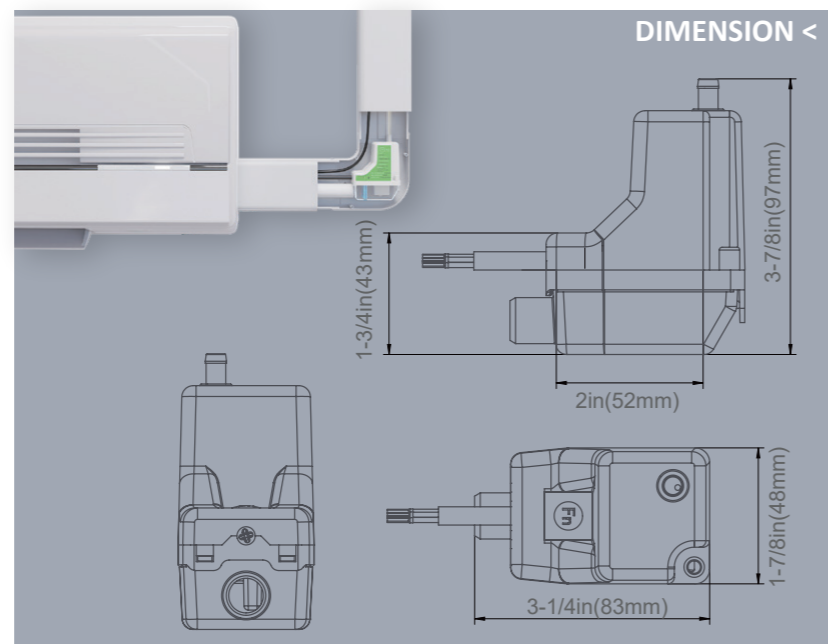
Model	NUSC-39FA
Power supply	115V&230V 50/60Hz
Power	<4W
Max. flow	4.8GPH(18L/H), range from 3.2-4.8GPH(12-18L/H)
Sound level	17-19dB(A) @ 3.3ft(1M)
Max. discharge head	39.4ft(12M)
Max. suction lift	6.6ft(2M)
Max. unit output	54,600Btu/h(16kw)
Safety switch	3A Normally closed
Max. water temperature	104°F(40°C)
Discharge tube	1/4in(6mm) ID
Class	II appliance <input type="checkbox"/>
Rated	Continuous
IP Protection	Fully potted, IP-45
L×W×H	3-1/4" × 1-7/8" × 3-7/8" 83mm × 48mm × 97mm

TYPICAL PERFORMANCE <

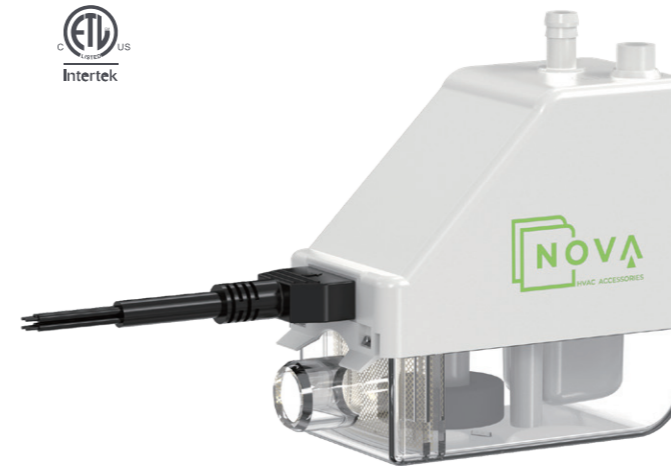


>IN THE BOX

- Assembled Unseen Corner
- Breather hole 6mm od
- Assembled inline reservoir
- 1.5m length of 6mm i/d vinyl tube
- Inlet tube
- Power cable
- Adapter
- 4×200mm×5mm cable ties
- Check valve
- 1 A fuse
- Line Set (As option)



UNSEEN CORNER-F



CONDENSATE PUMP

- Float Switch Detection
- Plug & Play
- Fit with trunking elbow
- Anti-vibration
- Silent Operation

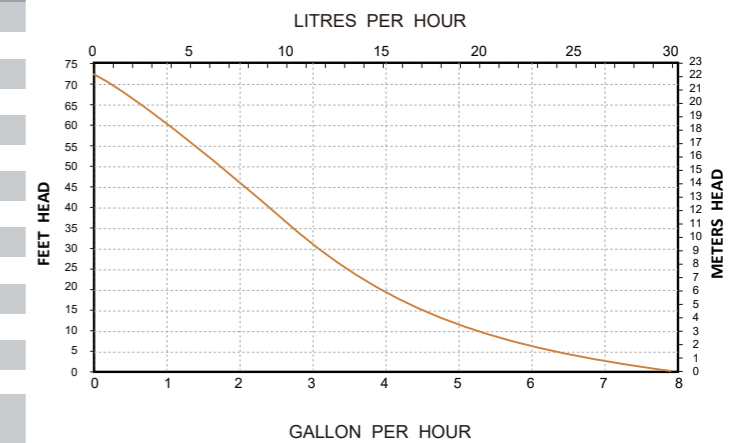
- Max flow **10.6GPH(40L/H) @ 0 head**
- Sound level **20dB(A) @ 3.3ft(1M)**
- Max. discharge head **65.6ft(20M)**

The sleek, compact design of the Unseen series pumps makes them ideal for integration with mini-split and ducted HVAC systems. Operating via float switch mechanism, Unseen series delivers exceptional condensate removal performance while maintaining whisper-quiet operation, ensuring optimal environmental comfort.

> TECHNICAL DATA

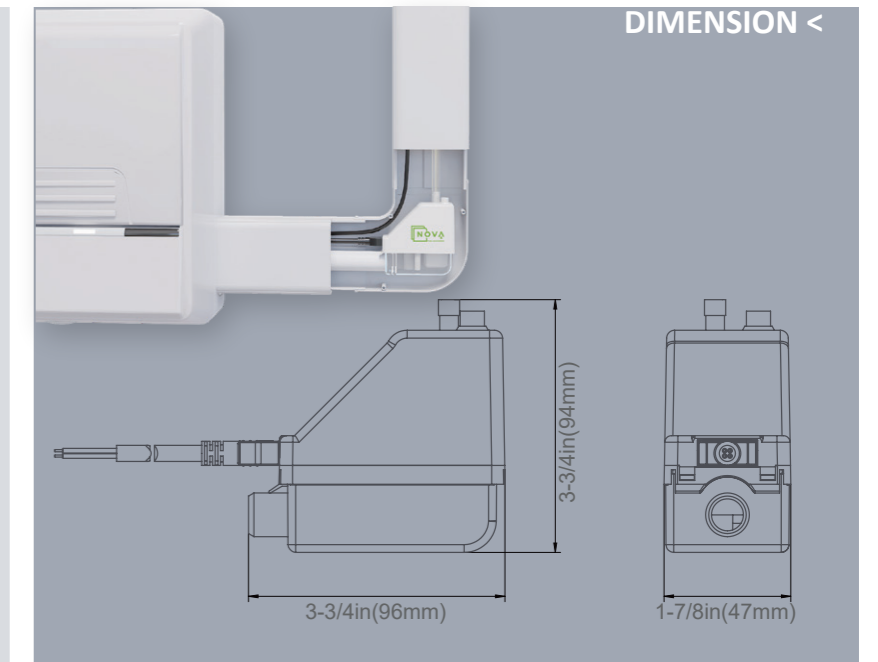
Model	NUSC-65FA-F
Power supply	115V&230V 50/60Hz
Power	<4W
Max. flow	10.6GPH(40L/H) @ 0 head
Sound level	20dB(A) @ 3.3ft(1M)
Max. discharge head	65.6ft(20M)
Water Storage	65ml
Max. suction lift	6.6ft(2M)
Max. unit output	157,000Btu/h(46kw)
Safety switch	3A Normally closed
Max. water temperature	158°F(70°C)
Discharge tube	1/4in(6mm) ID
Class	II appliance <input type="checkbox"/>
Rated	Continuous
IP Protection	IPX5
L×W×H	3-3/4" × 1-7/8" × 3-3/4" 96mm × 47mm × 94mm

TYPICAL PERFORMANCE <



> IN THE BOX

- Assembled Unseen Corner-F
- 6mm i/d vinyl tube
- Assembled inline reservoir
- 1.5m length of 6mm i/d vinyl tube
- Inlet tube
- 4 - pin socket
- Adapter
- 4 x 200mm x 5mm cable ties



TRAP KIT

- The trap's clear design enables effortless cleaning and inspection.
- Equipped with watertight blue caps, ensuring easy access for cleaning both the trap and the drain pan outlet.
- Provided with brush (optional)

Model	Size
NTRAP34	3/4"



WET SWITCH

- Automatically cut off the power line/equipment with detection of presence of water
- LED indicators display operating status
- Flexible installations; usually placed in a drain pan, or on floor
- Manual reset for multiple uses
- Easy and quick installation



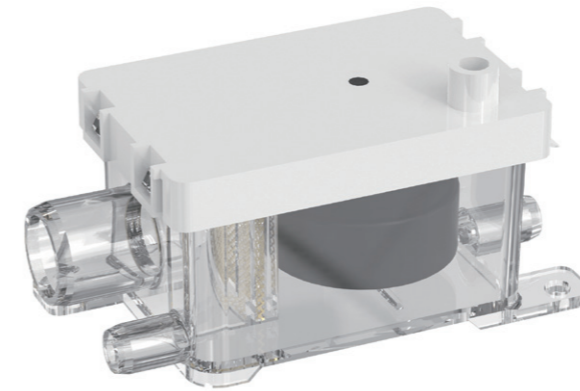
Model	Rated Current	Rated Voltage	Electrical Connection Type	Switch
NWETS	3A	12-30VAC 50/60Hz or 12-36VDC	Independently powered	Normally closed (N/C) Normally open (N/O)



TRANSPARENT PIPE

Model	NTP14-82F	NTP38-82F	NTP12-82F	NTP58-82F
	NTP14-100F	NTP38-100F	NTP12-100F	NTP58-100F
Size	1/4"	3/8"	1/2"	5/8"
Diameter ID (mm)	6	10	12	15
Diameter OD (mm)	9	14	16	50
Length per roll	82ft(25m) / 100ft(30m)			
Material	PVC			
Temperature	50°F~140°F(10°C~60°C)			

INLINE RESERVOIR



Assembled inline reservoir includes:

- Lid & sensor cable
- Float
- Filter
- Reservoir



Assembled inline reservoir includes:

- Lid & sensor cable
- Filter
- Reservoir

PRODUCT ACCESSORIES

CHECK VALVE



- Unidirectional adaptor

ANTI-SIPHON JOINT



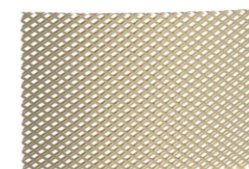
- Prevent siphon; Used in AquaFlow & Unseen series pumps

PLASTIC CABLE TIES



- Hold tubes firmly in place to prevent movement, vibration, and sagging

INLET FILTER



- Prevent dirt from entering the pump directly

INLET HOSE



- Customizable Lengths per Request

MAGNET FLOAT



- Used in AquaFlow & Unseen series pumps